

*The*

# BRIDPORT

*Flyer*

GRATIS

SUMMER 2026

THE **FREE TOWN GUIDE** ABOUT BRIDPORT **FOR BRIDPORT**  
PRODUCED QUARTERLY: SUMMER • AUTUMN • WINTER • SPRING

**LOCAL NEWS & PHOTOS**

REGULAR CONTRIBUTORS

**LOCAL BUSINESSES &  
SERVICE PROVIDERS**

LOCAL TOWN &  
AREA MAPS

Photograph by  
**NEIL BARNES**

## CLOCKTOWER RECORDS BRIDPORT

VINYL RECORDS AND CDS AT POSSIBLY THE MOST  
COMPETITIVE PRICES IN THE SOUTH WEST.

St Michaels Estate, Bridport, DT6 3RR Mon - Sat:10am - 4.30pm

[clocktowerrecords.co.uk](http://clocktowerrecords.co.uk) we buy, sell, trade vinyl records **01308 458077**



## Rural Ranges; The home of premium range cookers

At Rural Ranges we specialise in giving customers a bespoke and personalised service, offering Aga and range cooker solutions designed for you and your home.

Alongside the highest quality reconditioned Agas, we offer a full servicing, repair and refurbishment service and we are industry leaders in electric Aga conversions, with our services extending across the UK and beyond.

Not only are we Aga experts, but our dedicated cooker showroom and cookshop in Bridport, Dorset, features a collection of premium range cookers, from trusted brands including Lacanche, Bertazzoni, Ilve, Esse and Rangemaster, as well as outdoor cooking from Charlie Ovens.

Our friendly and knowledgeable team pride themselves in helping you find the very best fit for your home, lifestyle and budget and bringing your Aga or range cooker dream to life.



Premium Cooking Specialists | Reconditioned Agas | Controllable Aga Conversions  
Showroom & Cookshop | Range Cooker Servicing, Maintenance & Repair



Unit 5 & 6 Edwards Building, North Mills, Bridport, Dorset, DT6 3BE  
[www.ruralranges.com](http://www.ruralranges.com) | [info@ruralranges.co.uk](mailto:info@ruralranges.co.uk) | 01308 488994

## Welcome to The Bridport Flyer for Summer 2026!



Our front cover is an unusual view of West Bay, looking east over the harbour, and published with thanks to local photographer Neil Barnes. See more of Neil's work in his gallery in South Street.

On **Page 6** we have an interesting article on moths, from local enthusiast Paul Butter. Paul will be hosting his next moth event on Stonebarrow on 29<sup>th</sup> July.

On **Page 10**, we bring readers an article and photos on the work which was carried out in March, restoring the sandy beach at Lyme Regis.

Bridport Youth and Community Centre have a full programme this Summer; please read their article on **Page 14**.

West Bay Discovery Centre are celebrating the first 25 years of The Jurassic Coast's designation. You will find their article and photos on **Pages 16 & 17**. On **Pages 18 & 19** are our useful local and area maps, to include the locations of Defibrillators and EV Charging points.

Lots of news from Charmouth Heritage Coast Centre on **Pages 24 & 25**, including activities in July and August to keep the youngsters busy!

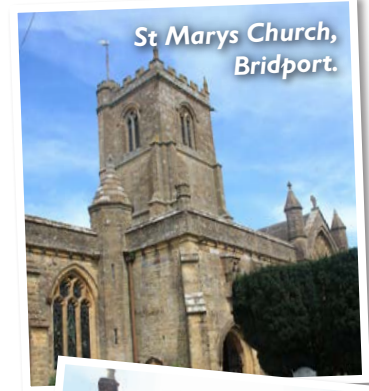
Dorset Council and "Get Active Outdoors" have a number of weekly activities and courses available. Read about this on **Page 26**.

In April we took a ride on the "West Bay Green Bus". More details and the timetable on **Pages 28 & 29**.

In this edition we have a great range of advertisers to help you. *Garden maintenance, home repairs and improvements, vehicle repairs and maintenance, art and craft galleries, days out.* Please support our advertisers, I am sure they will give you excellent value and service.

*Anthony Bucke.* EDITOR.

Email: [bridport@theantiquetourist.com](mailto:bridport@theantiquetourist.com)  
Wednesday 29 April 2026.



**Disclaimer:** The Bridport Flyer is published by The Flyer Publications, The Old Textile Mill, South Street, Crewkerne, TA18 8AG. Whilst every effort is made to ensure accuracy, no liability is accepted by the publishers for inaccuracies or omissions in the content of The Bridport Flyer. This publication is distributed free of charge in the DT6 postcode. If you would like your own free copy, please contact the publishers at the above address. No content of the publication may be reproduced without the written consent of the publishers.

**Copyright:** The Bridport Flyer 2026



# WARDON HILL TRADING POST

A37 DORCHESTER - YEOVIL DT2 9PW

**Tel: 01935 83069**

ANTIQUES, VINTAGE, COLLECTABLES,  
CRAFT & SO MUCH MORE...

OVER 80 TRADERS, THE EMPORIUM CAFÉ  
& GARDEN CENTRE



OPEN 7 DAYS A WEEK  
WHEELCHAIR ACCESSIBLE & DOG FRIENDLY  
SPACE AVAILABLE TO RENT

**BOOK DIRECT  
ONLINE**



It's even now easier to book  
your skip delivery and return  
or a rubbish collection:  
[bookonline.axeskiphire.co.uk](http://bookonline.axeskiphire.co.uk)



Transform your cluttered space  
into a clean and stress free haven.



Eco Friendly  
Disposal



Transparent  
Pricing

01297 32470 | [skips@axeskiphire.co.uk](mailto:skips@axeskiphire.co.uk)

[www.axeskiphire.co.uk](http://www.axeskiphire.co.uk)

**AB Classic Restorations**  
*Your Friendly Local Classic Car Garage*

- Vintage & Classic
- Restorations
- Servicing & Repairs



Website: [abclassicrestorations.co.uk](http://abclassicrestorations.co.uk)  
Call us: 01308 888004

**3C THREE COUNTIES  
PEST CONTROL**

East Devon, West Dorset, South Somerset

FRIENDLY, LOCAL AND PROFESSIONAL  
HELP WITH YOUR PEST PROBLEMS

**WASPS, RODENTS, MOLES & INSECTS**

Call Jonathan: 07484 677457  
[3cpestcontrol@gmail.com](mailto:3cpestcontrol@gmail.com)  
[www.3cpestcontrol.co.uk](http://www.3cpestcontrol.co.uk)



**OLLY'S GARDEN &  
PADDOCK MAINTENANCE**

General Garden Maintenance • Fencing • Lawn & Paddock Mowing  
Ground Clearance • Garden & Landscaping Consultancy & Advice  
Firewood Processing & Log Splitting • Compact Tractor Services & Loader Work  
Hedge Trimming • Pruning & Rural Management



**HORTICULTURAL QUALIFIED & FULLY INSURED**



Find us on:  
facebook



Visit us on:  
Google

Olly Hone Garden  
& Paddock Maintenance

**07786 998227**  
[ollysgardenservices@gmail.com](mailto:ollysgardenservices@gmail.com)

# Climate Messengers

2026 has begun again warmer than average and it's not only the Primroses and Dandelions that have been out early.

Insects such as moths, butterflies and dragonflies are extremely sensitive to temperature changes and are important indicators of climate change.

In the UK generalist species that are mobile and not restricted to a particular scarce habitat such as fens, saltmarshes or chalk downland have been moving north at about 5km per year as the south gradually gets

too warm for them.

The male Muslin moth is a typical spring species the dark colour and furry body help keep its' body temperature up on cold nights, but the female is actually white and flies during the day when it's warmer.

The Purple Thorn holds its' wings in a curved posture making it look like a bunch of dead leaves when at rest amongst shrubbery making it very hard for any predator to spot.

The Coxcomb Prominent came out two weeks early in Lyme Regis this year. The Latin name of this moth is capucina and

coincidentally it looks like a cup of cappuccino with a creamy head and coffee coloured wings.

The most surprising record however has been one of a Peach Blossom. This aptly named moth has beautiful peach blossom markings and was a full month early, possibly the earliest record yet.

Paul Butter



The Purple Thorn

National Trust moth events on Stonebarrow for Summer 2026 are 9.00am -11.00am on 29th July, 12th August and 29th August.

(More details on The National Trust website [www.nationaltrust.org.uk](http://www.nationaltrust.org.uk))



Male Muslin Moth



Coxcomb Prominent



Peach Blossom

## GARAGE DOORS

QUALITY NEW GARAGE DOORS, REPAIRS AND AUTOMATION

**OUR SHOWROOM IS NOW OPEN!**

CALL PETE TODAY TO VISIT OUR BRAND NEW HONITON SHOWROOM AND VIEW THE SUPERB RANGE OF "GARADOR" DOORS IN ACTION

TRADITIONAL UP & OVER TO FULLY AUTOMATIC, INSULATED ROLLER AND SECTIONAL DOORS!

**WWW.FIRSTLIGHTPM.CO.UK**  
**01404 43238**  
**07735 414746**

**FIRST LIGHT**  
HOME IMPROVEMENTS

**UP TO 40% OFF**

ALL NEW DOORS, OPERATORS & ORDERS THROUGHOUT 2026!  
DISCOUNT APPLIES TO MANUFACTURER LIST PRICES

**HONITON'S PREMIER GARAGE DOOR SPECIALIST**  
FIND US AT UNIT 5, 18 KING ST, HONITON EX14 1AF

## CARAVAN & MOTORHOME Solutions

- MOTORHOME HABITATION CHECKS
- MOTORHOME & CARAVAN INSURANCE REPAIRS
- MOTORHOME VEHICLE SERVICES
- SOLAR PANELS & LEISURE BATTERIES
- ACCIDENT REPAIRS
- INSURANCE APPROVED BODY SHOP
- CARAVAN SERVICING
- SHOWER TRAY & SINK REPAIRS
- VALETING

**CALL US ON: 01460 63320**

[info@caravanmotorhomesolutions.co.uk](mailto:info@caravanmotorhomesolutions.co.uk)

[www.caravanmotorhomesolutions.co.uk](http://www.caravanmotorhomesolutions.co.uk)

Littlecombe Garage, Touches Lane, Chaffcombe Rd, Chard, Somerset, TA20 1RR



**WE BUY ALL  
CARS, VANS & MOTORBIKES**

*New & Old, Expensive or Cheap*

**FINANCE SETTLED  
INSTANT DECISION  
SELLING YOUR CAR  
MADE EASY**

*Don't part exchange your car, we can give you a top price for your car and you can get a better deal on your new one*

**WWW.PAULFREWMOTORS.CO.UK**  
**CALL US FOR A FREE VALUATION 01460 239000 | 07966 415801**



Bespoke Woodwork

- Windows
- Doors
- Conservatories
- Kitchens
- Fitted Furniture

**07508 376 003**  
lottie@treewoodwork.co.uk  
www.treewoodwork.co.uk



Electrical, Plumbing and Heating

**Domestic, Commercial & Industrial Electrical Contractors**

Plumbing and Heating Contractors  
Bathroom and Kitchen Fitting  
Tiling and Gas Safety Checks  
Boiler Servicing and Repairs

**01308 420831**

www.topsparks.com | info@topsparks.biz  
3-5 East Road Business Park, Bridport, DT6 4RZ







**YARCOMBE WOODLAND PRODUCTS LTD**





○ Agricultural Fencing & Wire    ○ Fence Panels & Posts    ○ Treated Timber & Cladding    ○ Garden Furniture  
○ Sheds & Summerhouses    ○ Decking & Sleepers    ○ Concrete Fencing Supplies    ○ Garden & Driveway Gates

**Hinton St George, TA17 8TN**    **www.yarcombewp.com**  
Tel: 01460 76238




Follow Us




VINTAGE • ANTIQUE • RETRO • CRAFTS • SOUVENIRS

VISIT US FOR A GREAT FAMILY DAY OUT ON THE JURASSIC COAST  
OVER 100 TRADERS  
NEW TRADERS WELCOME


info@customs-house.co.uk • 01308 422222  
Space from £60 per month



**FREE ENTRY**    **WEST BAY • DORSET**    **FREE ENTRY**

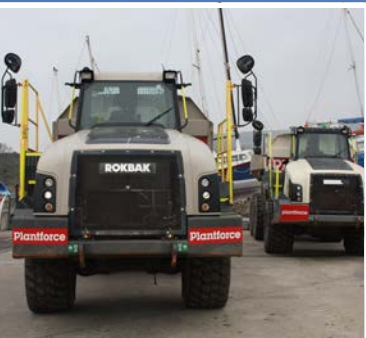


**NEIL BARNES**  
BRIDPORT & WEST BAY PHOTOGRAPHER  
DORSET LANDSCAPES & SEASCAPES



*Prints • Canvas • Cards*

**42 South Street • Bridport • DT6 3NN**  
(opposite Electric Palace)  
0800 234 3610 / 07760 669 231  
www.neilbarnes.com



## REPLACING THE BEACH AT LYME REGIS.

The Bridport Flyer stumbled upon urgent work being carried out to restore the "beach" on the foreshore adjacent to The Cobb at Lyme Regis. A quiet Sunday lunch in Lyme Regis mid-March turned into a fascinating story about the "beach".

Ovenden Earthmoving Ltd had been engaged by Dorset Council to replace the sand which had previously been imported from France (at unknown cost) to create a false beach near the western end of Marine Parade. As often happens, Nature took over, and during the recent winter storms, swept away the sand. Ovenden's contract was to find the sand and replace it! This is what happened between

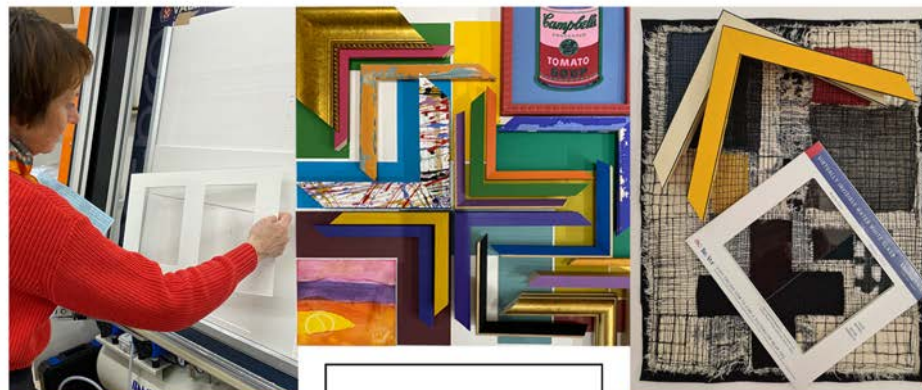
Wednesday 18 March, and Monday 23 March 2026 – an estimated 8,000 cubic metres of sand was excavated and returned to its original location. No mean feat! To get the full story The Bridport Flyer returned to Lyme on Monday 23<sup>rd</sup> to talk to the team who had been hard at work every day, once the tide receded, to permit earth-moving machines onto the foreshore. The discussions revealed that from a marine point of view the imported sand idea was doomed! Placing the sand (where it once again resides) blocks a natural exit from The Cobb – a necessary exit to ensure the harbour area self-cleans. The false bank of sand prevents the cleansing waters exiting across the foreshore. So

in extreme storm conditions Nature took over and removed the blockage!

On Monday 23 March the Ovenden Earthmoving team were in good heart, despite having been targeted by thieves over the previous night! The thieves stole diesel fuel and vandalised plant by smashing the cab-glass of 3 earth-moving machines.

Their machines will be hauled off-site over the next couple of days, bound for another interesting challenge!

Monday 23 March 2026



CREWKERNE · BEAMINSTER  
01460 497589 · 01308 800693



**CONSERVATION FRAMERS** with a wealth of knowledge, and a wide choice of frames, we professionally frame your art, textiles and objects.  
**FINE ART PRINTING** for artists and photographers, on a wide range of fine art papers and canvas, with digital copying of artworks for giclée prints.  
**GALLERY** destinations for art lovers, collectors and creators alike.



[www.artandbeyond.co.uk](http://www.artandbeyond.co.uk)  
[www.artandbeyondprinting.co.uk](http://www.artandbeyondprinting.co.uk)



**GDFS**  
Gavin Dixon Finance Solutions



**BRIDPORTS KEY TO COMPETITIVE FINANCE SOLUTIONS**

- ✓ Cars & Commercial
- ✓ Agricultural Equipment
- ✓ Holiday Homes
- ✓ Construction Equipment
- ✓ Building & Land Acquisitions
- ✓ Hire Purchase
- ✓ Finance Lease
- ✓ Contract Hire
- ✓ Loans

**REQUEST YOUR FREE QUOTE**

 **01308 480248**



As your local, independent finance specialists right here in Bridport, we understand the unique challenges facing our community's businesses. Whether you're a local farmer needing new equipment, a construction firm expanding operations, an office looking to upgrade IT systems, or looking to invest in green energy solutions, we're here to help.

With over 20 years' experience, a 5-star Trustpilot rating from 318 reviews, and as proud sponsors of the Bridport Business Awards, we're committed to helping our community succeed.

 RURAL FINANCE

[WWW.GDFS.CO.UK](http://WWW.GDFS.CO.UK)



GAVIN DIXON FINANCE SOLUTIONS LTD IS AN APPOINTED REPRESENTATIVE OF RURAL FINANCE LIMITED. RURAL FINANCE LIMITED IS AUTHORISED AND REGULATED BY THE FINANCIAL CONDUCT AUTHORITY, FIRM 630701. RURAL FINANCE LIMITED IS AN AUTHORISED CREDIT BROKER AND NOT A LENDER. WE OFFER FINANCIAL FACILITIES FROM A NUMBER OF FUNDERS AND A LIST IS AVAILABLE UPON REQUEST

*Regency*  
Care & Mobility



"For a new lease of Life"

**01460 271172**

[www.regencycareandmobility.co.uk](http://www.regencycareandmobility.co.uk)

- Mobility Scooters
- Rise and Recline Chairs
- Rise and Recline Beds
- Bath & Stair Lifts
- Daily Living Aids
- **FREE** After Care Service
- **FREE** Call Outs & Home Demonstrations

**Open**  
**Monday to Saturday**  
**9:00am to 4:00pm**

*Part exchanges offered on scooters*



**10 Falkland Square Crewkerne TA18 7JS**  
Email: [info@regencycareandmobility.co.uk](mailto:info@regencycareandmobility.co.uk)

Working with the NHS



# An update from Bridport Youth & Community Centre

Don't let the young one's have all the fun.

A great time was had in Bridport Youth and Community Centre at the Easter Holiday Clubs for 5 to 12yr olds. All sorts of activities: sports and team games, arts and crafts, chill out and social time, cooking activities and a lunch provided. These sessions were so popular, and we will be holding more in the summer holidays.

So, we thought, why should the kids have all the fun, after all this is a youth AND community centre, so we are starting a NOT SO YOUTH CLUB.



A brand-new social group, designed for the over 50's, who want to connect, laugh, move, learn, share interests and most importantly shape something special together. Inspired by the idea of boosting wellbeing and reducing social isolation, the Not So Youth Club will be

a place to 'hang out', bringing people together through simple, joyful, community powered activities.



We will have a café and shared cooking in the hub, starting with sessions led by Mark Heath from The Friendly Food Club. A chilled area with newspapers and magazines. Art and Crafts in the Studio with support from community artist Sarah Jane Ross and Bridport School of Regenerative Fashion. The Sports Hall is available for you to use, table tennis, netball, badminton equipment are all there. The Community room

can be used for music, chair-based exercises and we will invite guests with information and advice. We will start you off, but we want this to be a club built by the community for the community of Bridport, West Bay and the surrounding areas. A great way to get involved is to start as a volunteer, setting up, making teas etc.

It will be happening on the 3rd Wednesday of the month, 11am till 2pm. £3 per session. You can also sign up for a shared lunch for £5, limited availability

Launch date 20th May 2026 and thereafter, 17th June, 15th July, 19th August, 16th September, 21st October, 18th November.

This is a great club to be starting this year because we are celebrating our 10th anniversary! It was 2016 when Dorset Council stopped funding Bridport Youth Club and a group of trustees came together to form the charity Bridport Youth and Community Centre Trust. Along with a very small team of part time



employees, we rely on the help and support of volunteers to keep the centre functioning. If you have some time and inclination to help, please look at our website [bridportycc.org](http://bridportycc.org) to look at the variety of volunteer roles we need. Meanwhile here are some 10th celebration dates for your diary.

Quiz night, July 11th, with a Number 10th Theme.

Celebration Open Day with Party in the evening, September 19th.

BYCC bingo night, 10th anniversary special.



If you would like to get involved or need any more information on the above, please email Lesley Windsor, [community@bridportycc.org](mailto:community@bridportycc.org)

Website: [www.bridportycc.org](http://www.bridportycc.org)

Address: **Gundry Lane, Bridport, DT6 3RL**



## Auto Refurbs Ltd

From minor bump to major thump



- Low Bake Oven • Fully Equipped Body Shop
- Alloy Refurbishment • Air Conditioning
- Light Commercials • Caravans & Campers
- Motorbike Body Repair • Insurance Approved
- Collection & Delivery • Free Courtesy Cars

**01460 78000**

[www.autorefurbs.co.uk](http://www.autorefurbs.co.uk)

[workshop@autorefurbs.com](mailto:workshop@autorefurbs.com)

[@AutoRefurbsLtd](https://www.facebook.com/AutoRefurbsLtd)

**2E | CROPMEAD INDUSTRIAL ESTATE  
CROPMEAD | CREWKERNE | TA18 7HQ**



Tree surgery,  
garden maintenance and  
landscaping in the South West

**Tree Surgery  
Forestry  
Soft Landscaping  
Logs  
Chippings  
Trees & Shrubs**

Call us on 01308 456218  
for a FREE consultation  
and quote

Forest and Tree Care Ltd, Larkfield Barn, Burton Bradstock, Bridport DT6 4FF  
[www.forestandtreecareltd.co.uk](http://www.forestandtreecareltd.co.uk)  
[forestandtreecareltd@hotmail.co.uk](mailto:forestandtreecareltd@hotmail.co.uk)



## CREWKERNE SMALL BUSINESS CENTRE

Crewkerne Small Business Centre is a modern, professional office building.

We currently have hot desks, meeting rooms and are excited to create a local business community.

**01460 78000**

[WWW.CREWKERNEBUSINESSCENTRE.COM](http://WWW.CREWKERNEBUSINESSCENTRE.COM)

UNIT 2E, CROPMEAD INDUSTRIAL ESTATE,  
CREWKERNE, TA18 7HQ

## The Flyer PUBLICATIONS

NICK SULLY - Field Sales Manager

[theflyerpublications@gmail.com](mailto:theflyerpublications@gmail.com) P 07852 484419

**WE WANT YOUR BUSINESS TO SUCCEED!**



QUARTERLY TOWN GUIDE FOR  
CHARD & THE TA20 POSTCODE  
[www.thechardflyer.co.uk](http://www.thechardflyer.co.uk)



QUARTERLY TOWN GUIDE FOR  
CREWKERNE & THE HAMSTONE VILLAGES  
[www.thecrewkerneflyer.co.uk](http://www.thecrewkerneflyer.co.uk)



QUARTERLY TOWN GUIDE FOR  
BRIDPORT & THE DT6 POSTCODE  
[www.thebridportflyer.co.uk](http://www.thebridportflyer.co.uk)



COVERING HONITON, DUNKESWELL,  
MEMBURY AND COLYTON  
[www.thehonitonflyer.co.uk](http://www.thehonitonflyer.co.uk)

# Changing Landscapes at West Bay

Locals and visitors alike have been flocking to West Bay Discovery Centre to explore its exhibition Changing Landscapes, and to discover more about West Bay's heritage, wildlife and attractions.

This year marks the 25th anniversary of the Jurassic Coast's designation as a UNESCO World Heritage Site. The exhibition celebrates this milestone, offering insight into how the 95-mile-long Jurassic Coast was formed and why it is internationally recognised for its outstanding value. Visitors can see a range of fossils found in the local area and explore how ongoing geological processes — including the impact of

climate change, continue to shape the coastline today. Dramatic video footage of cliff falls on a large screen TV brings these changes vividly to life.

The Centre's popular programme of Thursday morning guided walks continues throughout the summer. Led by knowledgeable volunteers, the walks highlight the local area's rich but often hidden heritage and fascinating wildlife. Details can be found on the Centre's website and Facebook page. The walks start from the Centre on Thursdays at 11 am and cost £5 per person (payable on the day).

The Discovery Centre operates on a not-for-profit basis, and admission is free, although donations are welcome to help meet running costs. It is open six days each week, Tuesday to Sunday (11 am to 4 pm) until the end of October, with Monday opening during school holidays.

The Centre is supported by a dedicated team of volunteers and is currently looking for new helpers, especially at weekends. If you have around 2.5 hours to spare once a fortnight or month, and would enjoy being part of a friendly, welcoming team, the Centre Manager would love to hear from you.

Please email Macarena Styles at [manager@westbaydiscoverycentre.org.uk](mailto:manager@westbaydiscoverycentre.org.uk) or visit the Centre in person.



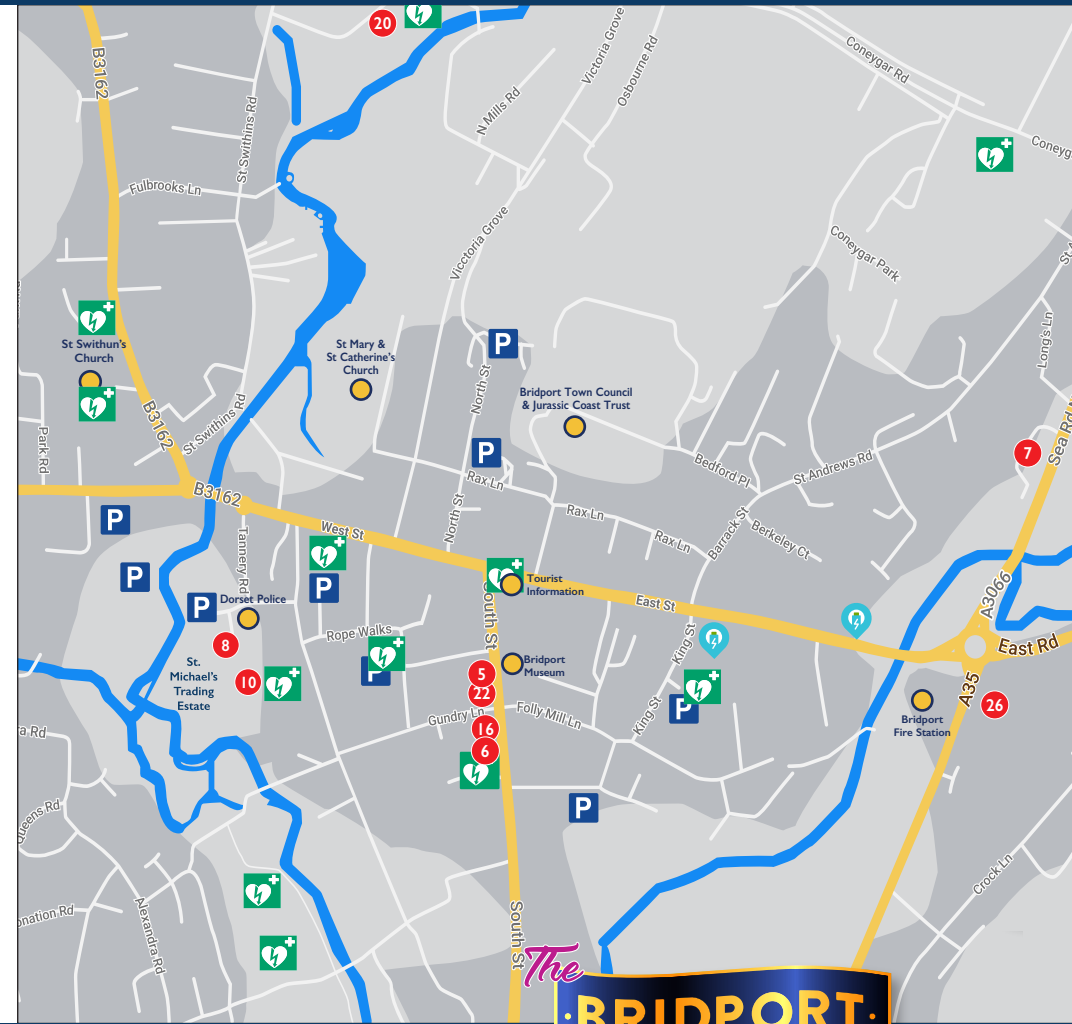
[www.westbaydiscoverycentre.org.uk](http://www.westbaydiscoverycentre.org.uk) Tel 01308-427288  
West Bay Discovery Centre, The Chapel on the Beach, West Bay, Bridport, DT6 4EN

# DT6 AREA MAP



- |                                  |                                     |                                  |
|----------------------------------|-------------------------------------|----------------------------------|
| 1. Art & Beyond                  | 11. Crewkerne Small Business Centre | 20. Rural Ranges                 |
| 2. Auto Refurbs                  | 12. Dorset Nectar Cider Farm        | 21. Sophie Rose Soft Furnishings |
| 3. Axe Skip Hire Ltd             | 13. Evans Plant Hire                | 22. StudiOne                     |
| 4. Beehive Self Storage          | 14. First Light Home Improvements   | 23. The Admiral Hood             |
| 5. Becca's Fabric Larder         | 15. Forde Abbey & Gardens           | 24. The Corner Garage            |
| 6. Bridport Lighting             | 16. Neil Barnes Gallery             | 25. The Customs House            |
| 7. Bridport Windows              | 17. Paul Frewen Motors              | 26. Top Sparks UK Ltd            |
| 8. Burwoods Electrical           | 18. Redlands Yard                   | 27. Wardon Hill Trading Post     |
| 9. Caravan & Motorhome Solutions | 19. Regency Care & Mobility         | 28. Yarcombe Woodland Products   |
| 10. Clocktower Records           |                                     |                                  |

# BRIDPORT TOWN MAP



## MOBILE SERVICES

- AB Classic Restorations
- ABC Blinds
- Angel Carers
- Forest & Tree Care
- Garden Guru
- Gavin Dixon Financial Solutions Ltd
- MH Electrical
- Oliver Hone Garden & Paddock Maintenance
- SCM Garage Doors
- Three Counties Pest Control
- Tree Bespoke Woodwork



# THE CORNER GARAGE

Reliable Car Garage Services in Bridport Since 1936

Your Trusted Local Experts for Car Servicing, Repairs, MOTs, and More

- MOT
- Welding
- Car Servicing
- Car Repairs
- Clutch Replacements
- Free Courtesy Car
- Brakes
- Engine Tuning
- Engine Diagnostics
- Car Valeting
- Car Batteries
- Breakdown Recovery
- Engine Repair
- Friendly Service
- Gearbox Repairs

All makes serviced, specialising in  
**Volkswagen ŠKODA Audi SEAT**

Proud members of the Good Garage scheme 

**Classic Car Enthusiasts**  
we undertake all types of  
classic car work with over  
45 years of experience.

Proprietor: Mr Chris David 01308 488238 07799 335287  
The Corner Garage, Melplash, Bridport, DT6 3UD  
cornergarage@btconnect.com www.cornergaragebridport.co.uk



## SCM GARAGE DOORS

We are a local, family-run business installing, repairing and maintaining all types of garage doors & window shutters.

If you want to make your garage more secure, or want a way to improve the value and look of your property then have a new garage door installed by our professional team.

10 year guarantee on new installations - Free site survey & quotes

*A fantastic installation of our new garador garage door. A problem free process from start to finish from Simon and his team. We are delighted with our new garage door and thoroughly recommend SCM Garage Doors.*



Tel: 07902 501114 Email: simon@scmgaragedoors.com

 SCM garage doors Website: www.scmgaragedoors.com



**GARADOR**  
APPROVED INSTALLER

## THE ADMIRAL HOOD

Mosterton · Beaminster · Dorset · DT8 3HJ

**HONEST FOOD IN A REAL PUB**

Telephone: 01308 868338

www.theadmiralhood.co.uk



## MH ELECTRICAL

AERIAL, SATELLITE AND WIFI

ELECTRICIAN'S / TV ENGINEER'S



**MATT:**  
07447 302905

**MARK:**  
07508 805044



**Checkatrade.com**  
Where reputation matters



Enquiriesmhelectrical@hotmail.com

WWW.MHELECTRICAL.BIZ 

## Angel Carers

### Why Angel Carers?

- ✓ Independent, locally trusted care
- ✓ Quality, personalised care tailored to you
- ✓ Safe & reliable medication support
- ✓ Flexible visits to suit your needs
- ✓ Help with daily tasks, outings and support at home
- ✓ Peace of mind for you and your loved ones
- ✓ Specialist care and support for complex needs



### Live-in & Home Care

Personalised care that helps you stay independent

 contact@angelcarers.com  angelcarers.com  01308 459204



# 13TH & 14TH JUNE 2026

# WEST BAY

# VINTAGE RALLY



**GATE OPENS 9AM-5PM**

**ADMISSION:**  
**ADULTS £12**  
**OAP £10**  
**5-16YRS £3**  
**UNDER 5'S FREE**



**TRACTORS, STATIONARY ENGINES, STEAM ENGINES, MARQUEE EXHIBITS,  
 OUTSIDE & INSIDE CRAFTS, MARKET TRADERS, LOCAL FOOD & DRINKS,  
 RING EVENTS, AUCTION & MUCH MORE !!!!!**

**VINTAGE AUCTION, 10AM SATURDAY 13TH JUNE**  
**PITCHER & ASSOCIATES 07754754629**

**MELPLASH SHOW GROUND,**  
**WEST BAY ROAD, BRIDPORT, DT6 4EG**  
**WWW.WDVTSEC.COM**

**07918961095 - 07555097978**



**Garden Guru**  
 with Raye

Professional RHS-Qualified Gardener  
 Covering Dorset & Surrounding Areas

— Covering All Aspects of Gardening —

- Weeding • Pruning • Lawn Mowing • Plant Care
- Edging • Hedge Trimming • Sub-Division & More

Reliable, Professional Garden Care

📞 07709 065273 ✉ raypaul18@gmail.com

📍 Dorset & Surrounding Areas

**Sophie Rose**  
 Made to Measure Soft Furnishings



Curtains, Roman Blinds, Roller Blinds  
 Cushions, Lampshades & Upholstery

01308 861064  
 www.sophierosesoftfurnishings.com  
 11 Hogshill Street, Beaminster DT8 3AE

# ABC BLINDS

01308 424614

www.abcwindowblinds.co.uk



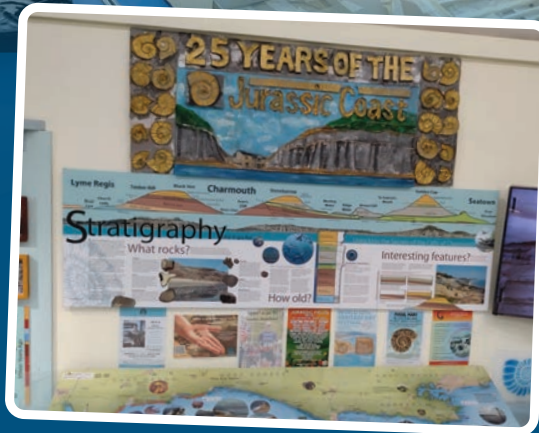
**BRIDPORT SHUTTERS LTD**  
 www.bridportshutters.co.uk



## CHARMOUTH HERITAGE COAST CENTRE

We've had a busy Easter period, with lots of fully booked events. We welcomed local artist Darrell Wakelam during the holidays who was making a 25<sup>th</sup> anniversary banner for the Jurassic Coast World Heritage Site, as part of our ongoing celebrations. This was a drop in event for families to help create the banner over two days and it will sit on display in our education room until the end of the year.

We had a successful Easter Shark Egg Case Hunt and recorded 91 cases for the Shark Trust as part of our citizen science programme. This was our second-best haul since January 2019 when we recorded 101. We also participated in the Great Dorset Beach Clean in April with over 50 participants joining to help keep our beaches clean. We recorded



the rubbish for Litter Free Dorset and the Marine Conservation Society.

Our 'Fossil of the Month' display continues and we have seen plesiosaur vertebra, and an ichthyosaur skull. A rare shark skull is currently on display until the end of May. The 2025 winners of the Children's Fossil Competition are now on display with us until the end of August, when they move onto the Lyme Regis Museum. This year's competition is now open until 30<sup>th</sup> September, and all the

entry requirements can be found on our website.

Our next big event is at the Lyme Regis Fossil Festival on Saturday 14<sup>th</sup> and Sunday 15<sup>th</sup> June. We will be in the marquee above the Marine Parade, bringing along some of our fossils and activities. You can come and meet the team for fossil hunting advice or bring along your fossils and ask us to identify them. The whole weekend is packed with talks, children's activities, walks, fossil preparation demonstrations, stall holders and institutions showcasing some amazing fossils and technology. You can find the full programme on the fossil festival website.

Our Marine Week programme is 24<sup>th</sup>-31<sup>st</sup> July, and we have a whole week of activities planned from seashore safaris to an aquarium visit. Very excitingly we will be showing Sir David Attenborough's Ocean movie. This will be a free event although seating is limited, so advanced tickets are required. They will be available for booking on our website. A community viewing will take place later in September.

We are joining the Etches Collection on 22<sup>nd</sup> August for their 10<sup>th</sup> anniversary celebrations. We will be taking along one of our big ichthyosaur skulls, so come along and see how our big beasts compare to the Sea Rex of Kimmeridge! They have lots of events taking part around the village all day.

More World Heritage Celebrations will be held later in the year including Geodiversity Day in October when we it will also be the Sidmouth Science Festival. Keep a look out on our social media channels to find out what will be going on!

Ali Ferris.



## Get Active Outdoors - Helping you to move more

The Get Active Outdoors 2026 programme offers entry-level activities designed to make moving more accessible, enjoyable and social. From **Nordic walking** and **health walks** to **cycling** and **Tai Chi**, there are plenty of ways to improve your health and wellbeing in a supportive outdoor environment.

You can view the full programme online or collect a printed brochure from your local library or community hub.

Visit:  
[www.dorsetcouncil.gov.uk/health-and-activity](http://www.dorsetcouncil.gov.uk/health-and-activity)

### GET INTO NORDIC WALKING – CHARMOUTH

With the support of a qualified Nordic Walking Instructor, these friendly courses will help you master the basics and improve your technique while enjoying the outdoors.

**Location:** Charmouth Recreation Field

**Cost:** £15 per person

**Booking:** Call the Dorset Council Health and Activity Team at Moors Valley Country Park, Golf and Activity Centre on **01425 480811**

**Course dates:**

**Tuesday 16 June**      5:30pm – 7pm  
**Friday 17 July**      5:30pm to 7pm



For more information visit  
[www.dorsetcouncil.gov.uk](http://www.dorsetcouncil.gov.uk)

### GENTLE HEALTH WALKS – BRIDPORT

Enjoy relaxed, friendly and free walks around Bridport in good company.

**Every Wednesday**, the group meets at the United Church, East Street, Bridport for a 20 to 40-minute walk on mainly flat, firm surfaces with gentle slopes and no steps or stiles.

A longer walk also takes place **every Thursday**, starting at **9:45am** from the **United Church** and lasting around 60 minutes. These routes may include moderate slopes, steps and uneven surfaces.

After both walks, walkers and leaders often enjoy a social catch-up at a nearby café.

*Just turn up — we look forward to seeing you there!*

For more information, visit  
[www.dorsetcouncil.gov.uk/dorset-health-walks](http://www.dorsetcouncil.gov.uk/dorset-health-walks) or call **01425 480811**

### BECOME A VOLUNTEER HEALTH WALK LEADER

Health walks are led by trained volunteers who help support people in the community to become more active. Without this dedicated and friendly team, health walks simply wouldn't happen.

If you enjoy walking, love being outdoors and would like to help others improve their health and wellbeing, we would love to hear from you.

Email: [dorsethealthwalks@dorsetcouncil.gov.uk](mailto:dorsethealthwalks@dorsetcouncil.gov.uk) or call: **01425 480811**



## Redlands Yard BROADWINDSOR



### RECORD VAULT

THE BEST PLACE TO  
BUY & SELL  
VINYL RECORDS

ROCK...REGGAE...SOUL...  
PROG...DANCE...METAL...

SKA...FUNK...POP...JAZZ...

Recent comments we've received:

"Amazing selection of great records"

"Outstanding quality"

"Lowest prices"

"Best Record Shop in the UK!"

"A hidden gem of a store!!"

"Massive selection, friendly & helpful"

### RECORDS TO SELL?

We've delighted hundreds of people by offering the best prices for their collections!

**07737 003891**

[WWW.RECORDVAULT.CO.UK](http://WWW.RECORDVAULT.CO.UK)

[IAN@RECORDVAULT.CO.UK](mailto:IAN@RECORDVAULT.CO.UK)

OPENING TIMES: 10AM - 5PM TUESDAY TO SATURDAY. PLUS SUNDAY 10:30AM - 4:00PM FROM JULY-SEPT



- 12000+ used records
- Hundreds of new vinyl
- Record Players
- Speakers
- CDs, Tapes, Books,
- Gift vouchers

Redlands Yard  
Broadwindsor  
Dorset DT8 3PX.



### HUNNY BUNNIES CRAFT, FABRIC & HABERDASHERY

Fabric for all uses, craft kits, Childrens clothes & accessories, personalised embroidery, good selection of haberdashery bits & pieces! Alison also offers a hemming & alterations service.

7 Redlands Yard,  
**07914 387246**, [hunny-bunnies.co.uk](http://hunny-bunnies.co.uk)

### EARTH DESIGN

A treasure trove of unique gifts from around the world. Silver, gold and gemstone jewellery. Stone and metal sculptures from Zimbabwe. Books, oils, crystals, baskets and much more.

**01308 868911**



[www.redlandsyard.co.uk](http://www.redlandsyard.co.uk)

Redlands Lane, Broadwindsor, Dorset DT8 3PX

# BRIDPORT TO WEST BAY

## SHUTTLE BUS SERVICE - SUMMER 2026

# WB1

The very popular “West Bay Green Bus” continues for the 2026 season. This was confirmed by a message published by Bridport town Council on 13th April 2026;

*“The WB1 West Bay Shuttle will be continuing on the current timetable until further notice”*

Considering the parking charges at West Bay, this is an ideal alternative for both Bridport residents, and visitors to our Town.

On Saturdays the service starts from Bridport at 09.45, and continues until the last return from West Bay at 21.00. On Sundays the service stops earlier – last return from West Bay 15.00.

We decided to try this service on Sunday 19<sup>th</sup> April. We met the bus outside The George at West Bay, and were greeted by driver “Steve”. The journey into Bridport was quick and easy, arriving at South Street carpark within around 10 minutes. At £1 per passenger this seems excellent value. We then chatted to Steve who said that the previous day, Saturday 18<sup>th</sup> April, was pretty busy with 160 passengers over the whole day. Steve very generously permitted a photograph for this edition of The Bridport Flyer. Thank you Steve, looking forward to seeing you in May with your copy of The Bridport Flyer.

### Summary

**SATURDAYS:** Departs from Bridport every 30 minutes from South Street Carpark to The George Hotel, West Bay,

returning 15 minutes later.

First service departs Bridport 09.45, last service departs Bridport 20.45, and returns from West Bay 21.00.

**SUNDAYS:** Departs from Bridport every 30 minutes from South Street Carpark to The George Hotel, West Bay, returning 15 minutes later.

First service departs Bridport 09.45, thereafter every 30 minutes, last service departs Bridport 14.45 and returns from West Bay 15.00.

**FARES:** £1 per person each way. Under 16’s go free!

*Anthony Bucke*  
EDITOR.

Monday 27<sup>th</sup> April 2026.



Driver “Steve” with his bus.

This very convenient service operates every Saturday and Sunday, plying between South Street Carpark, Bridport (access in Church Street) and The George Hotel at West Bay. Each trip is around 15 minutes, so you never have to wait long. The exceptions are when the driver has to stop for his break – a legal requirement. The fare each way is a very reasonable £1 for adults, and under 16’s go free.



### SATURDAYS

South Street Car Park (off Church St)	0945	1015	1045	- 1145	1215	1245	- 1345	1415	1445
St Marys Church	0946	1016	1046	- 1146	1216	1246	- 1346	1416	1446
Builders Merchant	0947	1017	1047	- 1147	1217	1247	- 1347	1417	1447
Flood Lane (formerly Mountjoy School)	0949	1019	1049	- 1149	1219	1249	- 1349	1419	1449
Roundham Gardens	0953	1023	1053	- 1153	1223	1253	- 1353	1423	1453
Meadowlands	0954	1024	1054	- 1154	1224	1254	- 1354	1424	1454
The George, West Bay (arr)	0955	1025	1055	- 1155	1225	1255	- 1355	1425	1455
The George, West Bay (dep)	1000	1030	1100	- 1200	1230	1300	- 1400	1430	1500
Meadowlands	1001	1031	1101	- 1201	1231	1301	- 1401	1431	1501
Opposite Roundham Gardens	1002	1032	1102	- 1202	1232	1302	- 1402	1432	1502
The White House for The Crown Inn	1004	1034	1104	- 1204	1234	1304	- 1404	1434	1504
Flood Lane (formerly Training Centre)	1006	1036	1106	- 1206	1236	1306	- 1406	1436	1506
Doctor Roberts Close	1008	1038	1108	- 1208	1238	1308	- 1408	1438	1508
Perpetual Gallery (now Soulshine)	1009	1039	1109	- 1209	1239	1309	- 1409	1439	1509
South Street Car Park (off Church St)	1010	1040	1110	- 1210	1240	1310	- 1410	1440	1510

### SATURDAY EVENINGS

South Street Car Park (off Church St)	1545	1615	1645	- 1815	1845	1945	- 2015	2045
St Marys Church	1546	1616	1646	- 1816	1846	1946	- 2016	2046
Builders Merchant	1547	1617	1647	- 1817	1847	1947	- 2017	2047
Flood Lane (formerly Mountjoy School)	1549	1619	1649	- 1819	1849	1949	- 2019	2049
Roundham Gardens	1553	1623	1653	- 1823	1853	1953	- 2023	2053
Meadowlands	1554	1624	1654	- 1824	1854	1954	- 2024	2054
The George, West Bay (arr)	1555	1625	1655	- 1825	1855	1955	- 2025	2055
The George, West Bay (dep)	1600	1630	1700	- 1830	1900	2000	- 2030	2100
Meadowlands	1601	1631	1701	- 1831	1901	2001	- 2031	2101
Opposite Roundham Gardens	1602	1632	1702	- 1832	1902	2002	- 2032	2102
The White House for The Crown Inn	1604	1634	1704	- 1834	1904	2004	- 2034	2104
Flood Lane (formerly Training Centre)	1606	1636	1706	- 1836	1906	2006	- 2036	2106
Doctor Roberts Close	1608	1638	1708	- 1838	1908	2008	- 2038	2108
Perpetual Gallery (now Soulshine)	1609	1639	1709	- 1839	1909	2009	- 2039	2109
South Street Car Park (off Church St)	1610	1640	1710	- 1840	1910	2010	- 2040	2110

### SUNDAYS

South Street Car Park (off Church St)	0945	1015	1045	- 1145	1215	1245	- 1345	1415	1445
St Marys Church	0946	1016	1046	- 1146	1216	1246	- 1346	1416	1446
Builders Merchant	0947	1017	1047	- 1147	1217	1247	- 1347	1417	1447
Flood Lane (formerly Mountjoy School)	0949	1019	1049	- 1149	1219	1249	- 1349	1419	1449
Roundham Gardens	0953	1023	1053	- 1153	1223	1253	- 1353	1423	1453
Meadowlands	0954	1024	1054	- 1154	1224	1254	- 1354	1424	1454
The George, West Bay (arr)	0955	1025	1055	- 1155	1225	1255	- 1355	1425	1455
The George, West Bay (dep)	1000	1030	1100	- 1200	1230	1300	- 1400	1430	1500
Meadowlands	1001	1031	1101	- 1201	1231	1301	- 1401	1431	1501
Opposite Roundham Gardens	1002	1032	1102	- 1202	1232	1302	- 1402	1432	1502
The White House for The Crown Inn	1004	1034	1104	- 1204	1234	1304	- 1404	1434	1504
Flood Lane (formerly Training Centre)	1006	1036	1106	- 1206	1236	1306	- 1406	1436	1506
Doctor Roberts Close	1008	1038	1108	- 1208	1238	1308	- 1408	1438	1508
Perpetual Gallery (now Soulshine)	1009	1039	1109	- 1209	1239	1309	- 1409	1439	1509
South Street Car Park (off Church St)	1010	1040	1110	- 1210	1240	1310	- 1410	1440	1510



**EVANS**  
PLANT HIRE

**Snorkel™ - S2770RT**  
Rough Terrain Scissor Lift

- 10M Working Height
- Self Levelling
- 4x4 Drive
- Rough Terrain Machine
- 580KG Basket Capacity



**NOW AVAILABLE FOR HIRE**  
at Evans Plant Hire  
Call for a free quote 01308 422446



**EVANS**  
PLANT HIRE

**TEL: 01308 422446**

VISIT OUR SHOP  
FOR TOOLS,  
ACCESSORIES  
& MACHINES

**PLANT & TOOL HIRE**



We supply an extensive range of equipment for hire for all types of work, including mini excavators from 1 ton – 9 ton machines, concrete mixers, compressors, compactors, rollers, generators, dumpers 1/2 ton – 6 ton, sandblasting equipment etc.

FULL RANGE OF GARDENING EQUIPMENT AND GENERAL TOOLS FOR THE DIY EXPERT.

**OPEN: MON-FRI 7.30AM -5.30PM SAT: 8.00AM - 1PM**

**evans-plant-hire@tiscali.co.uk www.evans-plant-hire.co.uk**

**UNIT 3, WESTWAY BUSINESS PARK, DOTTERY, BRIDPORT. DT6 5HR**

Bridport  Lighting



Large Range of Modern & Traditional Styles, whether you're looking for a statement chandelier or a simple lampshade we have the solutions to all your lighting needs.

Please check website for opening times

**Tel. 01308 422318**

52 South Street, Bridport, DT6 3NN

info@bridportlighting.co.uk | bridportlighting.co.uk



Based in the heart of the historic market town of Bridport, there has been an independent lighting shop at **52 South Street** for **over 40 years**.

With a large range of lighting to suit all tastes and budgets, from the latest technology and cutting-edge design to lighting suitable for traditional settings. Stocking lights for both **indoor and outdoor** settings.

With hundreds of lampshades in stock, Bridport Lighting caters to every need.

**Call in today to discuss your requirements.**



**SECURE SELF STORAGE**  
**DORSET & SOMERSET**

Secure, purpose built Self Storage facilities. Over 1,200 units with sizes from 20-250 sq ft. 24/7 CCTV and alarms.

beehive   
self storage

Call us now on  
**01460 243100**

or visit our website  
**beehiveselfstorage.co.uk**



**Lopen, Somerset**

Lopen Business Park  
Mill Lane, Lopen  
South Petherton, TA13 5JS  
**01460 243100**

lopen@beehiveselfstorage.co.uk

**Taunton, Somerset**

150 Priorswood Road  
Taunton, Somerset  
TA2 8DU  
**01823 323575**

taunton@beehiveselfstorage.co.uk

**Child Okeford, Dorset**

Gold Hill Business Park  
Child Okeford  
Blandford Forum, DT11 8HF  
**01258 861100**

dorset@beehiveselfstorage.co.uk



www.studiOne.com (0 is a Zero!)

Call us: 07486 062 343 Find us: 34 South Street, Bridport, DT6 3NQ

Sew \* Weave \* Paint \* Hire \* Craft \* Create



**WE TEACH**

Patchwork, Weaving, Collage, Machine Embroidery, Quilting, Willow Sculpture, Jewellery, Silver Clay Workshops, Floristry, Fused Glass, Mixed Media, Dying, Soft Furnishings, Dress Making, Doll & Teddy Making & More!

**WE STOCK**

Merchant & Mills, Craft Cottons, Sashiko Threads, Elastic, Haberdashery, Heritage Seams Preloved Textiles, Wadding, Felt, Books, Magazines, Threads, Kids Fabrics, Panels, Sewing Kits, Cutters & More!



www.beccasfabriclarder.com

**THE AUGUST EDITION OF THE BRIDPORT FLYER WILL BE OUT WEEK COMMENCING MONDAY 27<sup>TH</sup> JULY.**

**DEADLINE FOR INCLUSION FRIDAY 26 JUNE 2026.**

**WHY CHOOSE “The Bridport Flyer” for your advertising campaign?**

- Attractive, full-colour publication printed on quality paper-stock.
- Interesting editorial - locally focussed.
- Unrivalled distribution – 1 copy delivered by Royal Mail to every business and private address in DT6 postcode.
- Further copies available from our stands in and around Bridport.
- Every advertiser features on our centre-spread local maps.
- Free, professional design for your advert.

**Call Nick on 07852 484419 to book your space, or email theflyerpublications@gmail.com**

**WWW.THEBRIDPORTFLYER.CO.UK**



# Burwoods

DOMESTIC APPLIANCES



**COOKING | REFRIGERATION | LAUNDRY | DISHWASHERS  
TV & SOUND | FLOORCARE | SPARES & REPAIRS  
PROFESSIONAL DELIVERY AND INSTALLATION SERVICE**

Give us a call on:

# 01308 424196

or visit us in-store! Located behind Bridport Police Station  
**84 St Michaels Trading Estate, Bridport, DT6 3RR**  
Open Monday - Saturday: 8am - 5pm

Your local, family-run  
**euronics**

Stockists of a large range of appliances, including:



Has your appliance broken down?  
**WE CAN REPAIR IT!**  
Call us to book today!



## FORDE ABBEY AND GARDENS

CHARD, SOMERSET - TA20 4LU



### THE ABBOT'S TABLE CAFE



Thirty acres of award-winning gardens with cascading lakes, topiary-lined vistas, England's highest powered fountain, Abbot's Table Cafe, gift shop and plant nursery.  
[www.fordeabbey.co.uk](http://www.fordeabbey.co.uk)

# BRIDPORT WINDOWS

## DOORS & CONSERVATORIES LTD

Craig Turner has been trading for over 15 years through our Sister Company Turner Windows of Somerton. Before Turner Windows he was an Installer working for various Companies and working for himself. Brett and Naomi have both worked in the Double Glazing Industry for many years, a combined experience of over 60 years.

We hope to build our reputation the same way as the sister company Turner Windows of Somerton LTD [www.turnerwindows.co.uk](http://www.turnerwindows.co.uk), slowly but surely and doing what we say on the tin and contract.

Our team combines decades of

hands-on industry experience, offering expert advice and reliable service from initial consultation through to completion. We supply and install Aluminium and uPVC Windows, Composite Doors, and a wide range of Conservatory solutions, including modern Glass, Polycarbonate, and energy-efficient warm roof systems designed to create comfortable, usable spaces all year round.

We work with homeowners, farms and businesses, undertaking everything from small repairs and replacements to full property upgrades. Every

installation is completed with care, with a strong focus on workmanship, communication, and customer satisfaction.

As an Independent Network registered company working towards Which Trusted Trader status, we aim to give every customer complete confidence in the quality of our work.

Thank you for taking the time to find out more about the newest Double-Glazing Company in town.

[www.bridportwindows.co.uk](http://www.bridportwindows.co.uk)

Free, no-obligation quotations available.

# BRIDPORT WINDOWS

## DOORS & CONSERVATORIES LTD

SPRING  
SAVER DEAL  
10% OFF



✓  
Over 60 Years'  
Industry Experience

✓  
Full Service from  
Survey to Installation

✓  
Energy-Efficient  
Solutions That Last

Tel: 01308 422963 Email: [info@bridportwindows.co.uk](mailto:info@bridportwindows.co.uk)  
 Unit 2, Old Laundry Trading Estate, Sea Road North, Bridport DT6 3BD

[WWW.BRIDPORTWINDOWS.CO.UK](http://WWW.BRIDPORTWINDOWS.CO.UK)



## Summer Celebrations

# Dorset Nectar Cider Farm

### → Tasting Room & Farm shop

Mon to Thurs: 9am - 8pm  
Fri to Sat: 9am - 10pm  
Sun: 9am - 6pm

### → Cider Tours

Thurs, Fri, Sat - 11.00am  
Booking Essential

### → Cider Saturdays

From 1st April...  
live music and food 5pm onwards.

### → Ploughman's lunches

A delicious offering from  
Oliver's Kitchen - Thurs, Frid, Sat  
12.30 after the Cider Tour



**OPEN  
ALL  
YEAR**



Follow the large Brown Sign from the B3066 at the top of  
Bridport (Gore Cross) all the way to Dorset Nectar Cider Farm  
in Waytown, Bridport.

Strong Orchard, Pineapple Lane, Waytown, Bridport, DT6 5FT  
T: 01308 488382 M: 07515 806546 E: [dorsetnectar@live.co.uk](mailto:dorsetnectar@live.co.uk)

