

GRATIS

*The*

# BRIDPORT

*Flyer*

AUTUMN 2021

**THE FREE GUIDE TO BRIDPORT AND SURROUNDING AREAS**  
PRODUCED QUARTERLY: AUTUMN • WINTER • SPRING • SUMMER

ROYAL MAIL DELIVER ONE COPY OF THE BRIDPORT FLYER TO  
OVER 12,200 BUSINESS AND PRIVATE ADDRESSES IN AND AROUND  
BRIDPORT AND WEST DORSET.

LOCAL STORIES

LOCAL BUSINESSES &  
SERVICE PROVIDERS

LOCAL TOWN &  
AREA MAPS

[www.thebridportflyer.co.uk](http://www.thebridportflyer.co.uk)



FURNISHING CENTRE

Henry Bowers Workshops,  
Furnham Road, Chard, TA20 1AX

**FOR FANTASTIC SAVINGS  
on Carpets and Beds**  
Now's the time to visit PCS

[www.pcscarpets.co.uk](http://www.pcscarpets.co.uk)  Tel: 01460 61717

**SALE**  
NOW ON





**ETB**

**ETB Bridport**, based in East Road, depot has celebrated its **30<sup>th</sup> year** in the town with a recent refurbishment and new signage - with quality, value and great service at the heart of its offering.

Many motorists will know the depot as a former HiQ site, but it is now under new management and is expanding to provide even more memorable automotive experience.

ETB Bridport carries out diagnostic work and provides tyre, battery, exhaust, air-con, brakes, wheel balancing and alignment solutions, as well as MOTs.

For more information about ETB Bridport, visit [www.etbtyres.co.uk/bridport/](http://www.etbtyres.co.uk/bridport/) or call **01308 808810**.

**ETB AUTOCENTRES**

**ETB BRIDPORT FOR TYRES, MOT & MORE**

**TYRES AT GREAT PRICES**

Quality Budget	<b>Firestone</b>	<b>BRIDGESTONE</b>
205/55R16 91V	205/55R16 91V	205/55R16 91V
FROM ONLY <b>£45</b> OR LESS	ONLY <b>£57.95</b>	ONLY <b>£62.95</b>

**TYRE PRICE MATCH PROMISE**

**POWERFLOW EXHAUSTS** STAINLESS STEEL & MILD STEEL AVAILABLE  
**CUSTOM BUILT EXHAUSTS**

**MOT SLOTS AVAILABLE NOW**

**BOOK ONLINE OR INSTORE**  
**Call 01308 808 810**  
**www.etbtyres.co.uk**

**ETB INTERMEDIATE SERVICE FROM ONLY £90.00**

**OUR SERVICES:**  
TYRES • EXHAUSTS • BATTERIES  
MOT TESTING • WHEEL BALANCING  
WHEEL ALIGNMENT • BRAKES  
VEHICLE DIAGNOSTICS • SERVICING

MANAGE YOUR PAYMENTS WITH **mobox** OR **paymentassist**

**ETB BRIDPORT 16-18 East Road, Bridport, Dorset DT6 4AA**

## LATE SUMMER GREETINGS TO YOU ALL.....

*The* **BRIDPORT** *Flyer*

We are celebrating at The Bridport Flyer because this is our 4<sup>th</sup> edition, and therefore our first anniversary is fast approaching! Thank you all for your support and positive comments during our first year.

In this edition we have some interesting editorial on The Bridport Community Railway (**Pages 16 & 17**), an unusual contribution from local man Geoff Baker on **Pages 20 & 21** and a walk around Thorncombe Beacon and Chideock (**Pages 28 & 29**).

Read about the changes at Dreadnought Trading Estate on **Pages 11 – 13**, and exciting news from Dorset Council how to put your business on-line - FREE OF CHARGE, on **Page 36**.

So, lots to read and so many great adverts from local businesses and service providers. I really hope you enjoy our Autumn 2021 edition of The Bridport Flyer. Please support our advertisers, they eagerly await your custom. Shop local; buy local; buy British.

Finally our centre spread map now shows all the local charging points for electric cars. If we have missed any, please let us know.

Best wishes,

*Anthony Bucke* - Editor

T: 07854 377649

E: [bridport@theantiquetourist.com](mailto:bridport@theantiquetourist.com)  
Wednesday 25<sup>th</sup> August 2021.



PLEASE LIKE US AND FOLLOW US  
**@TheBridportFlyer**

Disclaimer: The Bridport Flyer is published by The Flyer Publications, The Old Textile Mill, South Street, Crewkerne, TA18 8AG. Whilst every effort is made to ensure accuracy, no liability is accepted by the publishers for inaccuracies or omissions in the content of The Bridport Flyer. This publication is distributed free of charge in the DT6 postcode. If you would like your own free copy, please contact the publishers at the above address. No content of the publication may be reproduced without the written consent of the publishers.

Copyright: The Bridport Flyer 2021.



## CARAVAN & MOTORHOME



- |                             |                        |
|-----------------------------|------------------------|
| MOTORHOME HABITATION CHECKS | CARAVAN SERVICING      |
| MOTORHOME DAMP REPAIRS      | ACCIDENT REPAIRS       |
| MOTORHOME VEHICLE SERVICES  | CAMPER VAN CONVERSIONS |
| SOLAR PANELS                | VALETING               |



Tel. 01460 63320 | Mobile. 07593 333576

[www.caravanmotorhomesolutions.co.uk](http://www.caravanmotorhomesolutions.co.uk)

Littlecombe Garage, Touches Lane,  
Chaffcombe Rd, Chard, Somerset, TA20 1RR

## Barrie Carter & Alan Bartlett Classic & Vintage Car Restoration



Experts in Pre & Post War MG's & All Classics  
60 Years of Vintage Restoration before  
they were Vintage!

See Alan's Award winning Jowetts  
& Barrie's Different TC

- XPAG Engine Rebuilds
- Carburettor Rebuilds
- Gearbox Rebuilds
- Anything on any Engine
- Unleaded Head Conversions
- Chassis Up Restorations

Servicing  
T Type Spares Bought & Sold  
Racing Preparations  
Collection & Delivery Anywhere in Europe  
Advice, Anecdotes and Catastrophes

**barriecartermg.com**  
**01308 868884 | 07885 768830**



Professional Collision Repair Centre  
Insurance Work • Panel Repairs & Refinishing  
Paint Matching & Respraying • Light Commercial  
Repair & Respraying • Free Estimates



Chemical Stripping Tanks • Shot Blasting  
Vapour Blasting • Powder Coating  
Alloy Wheel Refurbishment &  
Powder Coating Specialist

**01460 354105**  
**[www.autobodytec.com](http://www.autobodytec.com)**  
**[info@autobodytec.com](mailto:info@autobodytec.com)**



**01460 241286**  
**[www.mstgroup.co.uk](http://www.mstgroup.co.uk)**

Leading supplier and servicer of specialist  
land machinery across the South West.

### New & Used Machinery

- Agricultural
- Ground Care
- Garden Machinery
- Honda
- and so much more...

### Service & Parts

MST's large team of  
manufacturer-trained engineers  
in Somerset, provide a high  
level of service second to none.

**WE ARE HERE TO HELP 24/7 (Emergency Line)**

**07774 750825 / 07721 985113**

Unit 4, Yeabridge Farm,  
South Petherton, Somerset TA13 5LW



25 Years  
of Mobility  
Excellence

## 10 Good Reasons To Buy From Us

- ✓ Established 25 Years
- ✓ Latest & Largest Range in Dorset
- ✓ BHTA Accredited
- ✓ Fully Trained & Qualified Advisors
- ✓ Sales, Service & Hire
- ✓ Motability Dealership
- ✓ On Site Workshop
- ✓ Complimentary Loan Vehicles
- ✓ Reliable Local Company

FREE platinum breakdown  
cover as standard

**Active Mobility**  
For the independent lifestyle



VISIT OUR  
SHOWROOMS  
AT:



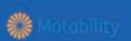
[www.active-mobility.co.uk](http://www.active-mobility.co.uk)

**DORCHESTER**  
**01305 21 31 41**

Paceycombe Way,  
Poundbury, DT1 3WB

**WEYMOUTH**  
**01305 77 44 22**

117 Radpole Lane,  
Southill, DT4 9SS





# Redlands Yard

## BROADWINDSOR

Redlands Yard in **Broadwindsor** is a fusion of **independent shopping, beauty and personal services with great food and exceptional Dorset hospitality** at its heart, creating a **memorable visitor experience**.

For over 30 years, this hub has been a **local and visitor favourite**. In recent times, Colin and Sarah Williams have brought an injection of vitality and innovation to the long-standing tradition of **bringing people together**, supporting West Dorset's abundant talent and creativity.



Our fabulous restaurant and independent shopping, beauty and personal services look forward to welcoming you soon

*The Stableyard Restaurant \* Woolly Wonders \* The Foxy Cottage \* Earth Design \* Attic Gallery Furniture  
Gallery of Makers \* Dimensions Hair Studio \* Sophia's Choice \* The Wobbly Cottage \* The Painted Nail*



[www.redlandsyard.co.uk](http://www.redlandsyard.co.uk) • 01308 285001

## CLINICAL & COGNITIVE BEHAVIOURAL HYPNOSIS

*Michelle Hague BA (Hons) Ed. PGCEd.  
PDCBHyp. PDCHyp. Fellow BSCH.*



*Helping you to take control of your life*

### HELPING PEOPLE WITH:

Stress. Anxiety. Fear. Phobias.  
Sleep Disturbance. Bruxism. PTSD. Trauma.  
Bereavement. Loss. Confidence. Relaxation.  
Goal Setting. Pain Management.  
Reactive Depression. Emotional Difficulties.  
Changing Habits. Tinnitus. CFS. Weight Loss.  
Stopping Smoking. IBS.

Tel: 07761 773563

Email: [mhague00@gmail.com](mailto:mhague00@gmail.com)

[www.takecontrolofyourlife.co.uk](http://www.takecontrolofyourlife.co.uk)



**EVANS**  
PLANT HIRE

## PLANT & TOOL HIRE & SALES

- Excavators ¾ ton - 9 ton
- Dumpers ½ ton - 6 ton
- Compactors
- Large Range of Gardening Equipment



BOTTLED

FLO GAS

Q8 Oils

CPA

OPEN: MON-FRI 7.30AM - 5.30PM SAT: 8.00AM - 1PM

**TEL: 01308 422446**

[evans-plant-hire@tiscali.co.uk](mailto:evans-plant-hire@tiscali.co.uk)

[www.evans-plant-hire.co.uk](http://www.evans-plant-hire.co.uk)

UNIT 3, WESTWAY BUSINESS PARK, DOTTERY,  
BRIDPORT. DT6 5HR



FENCING • DEMOLITIONS  
SITE CLEARANCE • GROUND WORKS  
EXTENSIONS • FOOTINGS  
TREE SURGERY  
DIGGER FOR HIRE • CONSTRUCTION  
PATIOS • DRIVEWAYS  
SWIMMING POOLS



[BESPOKELANDSCAPES@HOTMAIL.CO.UK](mailto:BESPOKELANDSCAPES@HOTMAIL.CO.UK)

**Mob. 07880 362227**



## Collectables & Vintage, Curios & Bygones

Broomhills Farm, West Bay Fields,  
Bridport DT6 5LB

[sales@Jurassicreclamation.co.uk](mailto:sales@Jurassicreclamation.co.uk)

[www.jurassicreclamation.co.uk](http://www.jurassicreclamation.co.uk)

Tel. 07398 939692



Open: 8.30am - 4.30pm Daily







  
 Beautiful vintage & re-presented furniture, textiles and accessories.
   
[www.pebblevintage.com](http://www.pebblevintage.com)
  
 St Michael's Trading Est, Bridport, Dorset.
   
[hello@pebblevintage.com](mailto:hello@pebblevintage.com)
  
 07713 859560



**ARTYFACTS STUDIOS**
  




  
 Calling all artisans and craftspeople.
   
 Do you need a place to work and sell without having to be there all the time?
   
 Come and join us at Artyfacts studios in Bridport
   
 Large and small units available
   
 40 St Michaels Lane, Bridport, DT6 3RD 
  
[artyfactsbridport@gmail.com](mailto:artyfactsbridport@gmail.com)
  
 Tel: 01308 301383


M.O.T. TESTING RECOVERY SERVICE
   
**THE CORNER GARAGE**
  
 ESTABLISHED 1936
   
 Volkswagen ŠKODA AUDI SEAT
   
 PROPRIETOR: MR CHRIS DAVID
   
 MELPLASH, BRIDPORT, DORSET, DT6 3UD
   
 TEL. 01308 488238
   

  
[CORNERGARAGE@BTCONNECT.COM](mailto:CORNERGARAGE@BTCONNECT.COM)
  
 MOBILE: 07799 335 287
   



  
**For personal & commercial insurance, it has to be Higos**
  
 Insurance protection that's tailored to your unique needs.
   
 Whilst other insurers may try and squeeze you into a one size fits all solution, our experts will provide cover that's 100% tailored to your needs.
   
 Our personal and commercial insurance includes:
   

Buildings & Contents	Commercial Liability
Holiday Home/Air B&B	Cyber
Landlords	Directors & Officers
Motor Vehicles	Professional Indemnity
Travel (including pre-existing conditions)	Shop/Offices

  
 For independent advice contact our expert team
   

 <b>Call Us</b> 01308 423777 Or 01308 502235	 <b>See us in branch</b> 44 East Street, Bridport, Dorset, DT6 3LJ	 <b>Email us</b> <a href="mailto:bridport@higos.co.uk">bridport@higos.co.uk</a>
--	---	--

  
**WE LOVE DIFFERENT / HIGOS.CO.UK**
  
Higos Insurance Services Ltd is a part of Global Risk Partners Limited. Higos Insurance Services Ltd is authorised and regulated by the Financial Conduct Authority (FRN 302690)
  



  
**ROCKBURN Ltd**
  
 Bouldering CLIMBING food
   
 CHILDRENS CLUBS outdoor
   
 climbing COACHING snacks
   
 EQUIPMENT RENTAL social
   
 inclusion FUN challenge
   

  
[www.rockburn-bridport.co.uk](http://www.rockburn-bridport.co.uk)
  
 01308 426375


  
**Regency**
  
 Care & Mobility
   
 "For a new lease of Life"

**01460 271172**
  
[www.regencycareandmobility.co.uk](http://www.regencycareandmobility.co.uk)

- Rise and Recline Chairs
- Rise and Recline Beds
- Bath Lifts
- Mobility Scooters
- Daily Living Aids
- **FREE** After Care Service
- **FREE** Call Outs & Home Demonstrations

Part exchanges offered on scooters

**Open Monday to Saturday 9:00am to 4:00pm**



**10 Falkland Square**
  
**Crewkerne TA18 7JS**
  
 Email: [regencycareandmobilityltd@btconnect.com](mailto:regencycareandmobilityltd@btconnect.com)

Working with the NHS
   




**Double D Computers** is a small independent business that provides excellent customer service and support with a broad knowledge within the computer industry.

The experienced and knowledgeable staff at **Double D Computers** are confident in carrying out any **computer repair**.

We provide a quick and reliable service, we will try and solve any problem to get your device working at its full capacity.

Double D only use **top-quality computer hardware** to perform upgrades or replacements within your computer system; this ensures the **optimum performance** and longest life for your laptop or PC.

We currently have two stores based in **Bridport** and **Dorchester** where our friendly staff are more than happy to help with technical support.



- Laptop & PC Sales and Repairs
- Screen Replacement Service
- Computer and Printing Consumables
- Ink Cartridges
- Data Transfers



Please visit our website to find out more  
[www.doubledcomputers.co.uk](http://www.doubledcomputers.co.uk)

We are now offering a delivery and home setup service



#### BRIDPORT

13B South Street,  
Bridport,  
Dorset, DT6 3NR  
01308 424240

#### DORCHESTER

3 Georgian House  
Trinity Street, Dorchester,  
Dorset DT1 1UB  
01305 757039

*So much more than a PC store....*



The **DREADNOUGHT TRADING ESTATE** is a busy Commercial estate in the heart of Bridport, within walking distance of the town centre.

The Estate is family-owned. We aim to provide a responsive and friendly service to the occupants. We believe that by working together we can create a supportive environment in which businesses can thrive.

This has resulted in an interesting variety of services and employment for the people of Bridport and surrounding area. Some of the occupants have been on the estate for more than 20 years, others have recently joined us.

We welcome the new businesses to the estate and wish them every success. They are:

- The **Hurt Locker gym**. A new venture by an ex-military man. An exciting addition to the diversification on the Estate.
- **Babygear**. A well-established local business selling prams and baby goods.
- **Mercato Italiano**. The most delicious authentic Italian food. Family run business importing Italian delicacies for the retail and wholesale market. A welcome addition to the expanding number of quality food businesses on the Estate.
- **Shaun Annetts Property Services**. A move and expansion of the business from their Beaminster premises.
- **RJM Contracts**. Groundworks and Building Contractors with years of experience in the business. Alex and his team are well-known for their good and hard-working ethos.

As the **DREADNOUGHT TRADING ESTATE** is in so much demand, there are plans afoot to upgrade and re-build some units. The aim is to continue improving the Estate to keep it a vibrant community and business hub in the centre of Bridport. **WATCH THIS SPACE!!**

#### The established businesses on the Estate include:

- Garages offering auto repairs, servicing and MOTs. These include **Greig & Allen, Motorcare** and **Bridport Car Repair Services**. Greig & Allen also offer services for Commercial vehicles under **G&A Commercial**. **Andys Workshop Services** offer Motorbike maintenance and repairs. **Moreys Diesel Services** offer servicing and repairs to diesel vehicles, and **Marque 21** are classic car specialists.
- Home Improvements: In addition to **Shaun Annetts Property Services**, there are **Bridport Timber & Flooring, Hussey & Briggs** for double-glazing and conservatories and **Liberty Kitchens** for the design of Kitchens and Bedrooms.
- For food: in addition to Mercato Italiano, we have popular caterers **Hungry Mule** (including the Rib Shop). The much-loved **Daveys Locker** selling seafood both wholesale and retail and **Dorset Spice Shed** are also based on the Estate.
- Other: Other services include **Essential Employment Law Services, Precision Engineering** and **accountants**.



*Turn over for more information on Dreadnought Trading Estate*



# DREADNOUGHT TRADING ESTATE



An industrial estate for over  
40 years in the heart of  
Bridport, Dorset

**01308 293050**

info@dreadnoughttradingestate.co.uk

www.dreadnoughttradingestate.co.uk

Dreadnought Trading Estate,  
Bridport, Dorset, DT6 5BP

Commercial Property To Let

**Babygear** The Baby Studio Ltd



We have moved  
Visit our bright new showrooms

- Travel Systems
- Rotating Car Seats
- Nursery Furniture
- Lay-Away Payment Plans

Website  
Babygearprams.co.uk

**COVID Safe Personal Appointments**



Babygear 3c Dreadnought Trading Estate, Bridport, DT6 3RL

Web: babygearprams.co.uk

Email: contact@babygearprams.co.uk

Tel: 01308 422552



# DREADNOUGHT TRADING ESTATE

**Greig & Allen**



(Bridport) Ltd

MOT's • Servicing • Repairs

**All Makes & Models**  
Brakes \* Batteries \* Exhausts  
Clutches \* Welding \* Servicing  
Class 4,5 & 7 MOTs  
Air-Con & Heating Systems  
Electronic Diagnostics

**Local and Friendly  
Garage Services**

**01308 424600**

**www.greigandallen.co.uk**

Unit 22, Dreadnought Trading Estate  
Bridport, DT6 5BU



*Mercato Italiano*

• BRIDPORT •

**NOW OPEN**  
DELICATESSEN & WAREHOUSE

COFFEE SHOP • SLICED MEAT • PANINI

YOUR INDEPENDENT ITALIAN FOOD IMPORTER

**COME AND FIND US!**  
**OPEN 9AM - 6PM MON - SAT**

UNIT 3B, DREADNOUGHT TRADING ESTATE,  
BRIDPORT, DT6 5BU  
01308 459274 - WWW.MERCATOITALIANO.UK

**HURTLOCKER**

BRIDPORT

New Hybrid  
Gym

A real community gym,  
loved by all the members

Ex - Army Owner



Nothing but five  
star reviews

OPENING TIMES:  
Mon: 0630 - 2100  
Tue: 0630 - 2100  
Wed: 0630 - 2100  
Thu: 0630 - 2100  
Fri: 0630 - 2000  
Sat: 0900 - 2000  
Sun: 1000 - 1500



UNIT 24



01308 480841



@hurt\_locker\_bridport



hurtlockerbridport





**HUSSEY & BRIGGS**

Windows, Doors,  
Conservatories and  
Home Improvements



Bridport  
01308 422366

find us at  
Unit 21 Dreadnought  
Trading Estate, Bridport

Dorchester:  
01305 269449

sales@husseyandbriggs.co.uk  
www.husseyandbriggs.co.uk

**Vicary & Co**

Chartered Surveyors & Property Agents

**Sales & Lettings**

**Your Local Independent Agent**

**Book your FREE  
market appraisal today!**

12a South Street, Bridport - 01308 459550  
5 South Street, Axminster - 01297 33449



vicaryandco.com



**MODBURY  
FARM  
SHOP**

**A REAL FARM SHOP ON A WORKING DAIRY FARM**

UNPASTEURISED MILK, FRUIT, VEGETABLES,  
FREE RANGE EGGS, BREAD, CAKES, HONEY,  
JERSEY ICE-CREAM, GIFTS, CARDS AND MORE!



**01308 897193**

info@modburyfarm.co.uk

www.modburyfarm.co.uk

Modbury Farm, Burton Bradstock, DT6 4NE



We are a farm shop on a working farm in the lovely West Dorset countryside, where we specialize in selling raw milk from our own herd of pedigree Jersey cows. We think of this as "milk as nature intended".



Our cows graze outside for most of the year. In the winter they are housed in warm barns on cosy straw beds. We farm with nature as much as possible encouraging all species of wildlife by providing the right habitat. In the shop we stock local produce wherever possible, in order to keep food miles down to a minimum. We stock Ecover products, so you can bring your own bottles and refill them.

The farm shop stocks home reared pork and beef sausages, subject to availability, and we are proud of our seasonal vegetables, home made jams and chutneys. We have free range eggs, bread, cakes, honey, Jersey ice cream, local cheeses, juices, preserves, cards, gifts and lots more.....

**VURLANDS  
ANIMAL FARM**



**THE EGGCUP**

PLAY AREA

PIG RACING

ANIMAL FARM

TEA ROOMS

**COME  
VISIT**

**TEL: 01308 897160 WWW.VURLANDSANIMALFARM.CO.UK**  
**COAST ROAD, SWYRE, DORCHESTER, DORSET, DT2 9DB**



**THE PARLOUR**

**TEL: 01308 897899**

THE PARLOUR, BREDY FARM,  
DORSET, DT6 4ND



**A FAMILY RUN RESTAURANT OFFERING TRADITIONAL NEAPOLITAN STYLE  
PIZZAS, HOME COOKED ITALIAN MEALS AND SUNDAY ROASTS.**



**ITALIAN CUISINE**



**SUNDAY ROASTS**



**NEAPOLITAN PIZZAS**

**EMAIL ENQUIRIES@THEPARLOUR-BREDYFARM.COM FOR ALL RESERVATIONS**





## BRIDPORT COMMUNITY RAILWAY & THE LITTLE LOCAL TRAIN

### THE BEST OF BOTH WORLDS

Bridport Community Railway has taken advice from industry professionals (including Sustrans) on the feasibility of delivering both a “Little Local Train” and a “Trailway” side by side and combining them to form a Green Corridor from West Bay to Maiden Newton that can serve a variety of needs.

“Engagement with stakeholders continues and with each query or challenge a technical solution can be found to overcome that problem”, Says Nigel Ewens Director of Jurassic Coast Railways.

The original railway was built to Brunel’s Broad Gauge which is wider than that of a single-track standard railway line. This means that there is room for both a Trailway for Walkers and Cyclists and other users alongside the railway for a significant part of the route.

“There are some locations where the routes of the little local train and trailway will need to diverge and there are some parts of the route where both elements will be separated. The key consideration here is that this is no longer a debate about Cyclists versus Railway Users, its about delivering something that serves both needs.”

“We imagine that people will be able to mix and match, riding in one direction by bike and taking the little local train back. In the areas where the routes diverge it creates the opportunity for regenerative forestry and re-wilding creating valuable habitat and leisure amenity.

There is a great deal of existing infrastructure that can be refurbished and utilised to support the development of the Green Corridor.

Bridge 8 at Powerstock Common is one example

of existing infrastructure that has come under threat in recent months, but The HRE Group of campaigners working locally and nationally is making progress to ensure these important assets across the country are not demolished.

Boris Johnson has even stepped in to support campaigners to give people more time to consider the future of these important assets.

“We are not out of the woods yet, so if there are local people with an interest in Cycling, Railways, Reforesting and Rewilding we would love to hear from them”.

A unified cycle / footpath / Trailway and railway linear leisure corridor would enable direct links to the National Cycle Network Routes 2 and 26 together with the following local footpaths: -

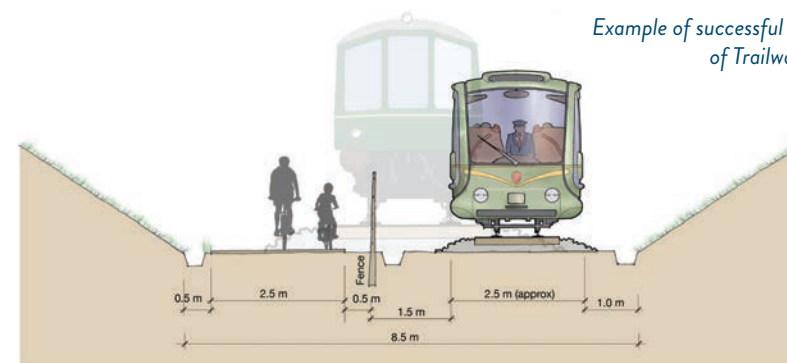
- Wessex Ridgeway path
- Macmillan Way
- Jubilee Way / Kingcombe Meadows
- Brit Valley Way
- Monarch’s Way
- S.W. Coast Path



Example of creating new field access for farmers / landowners – a bigger one to include Trailway



Linear Trailway / Railway leisure corridor utilising former trackbed



Example of successful co-existence of Trailway & Railway

Section through shared railway formation showing new narrow gauge railway and cycleway (former standard gauge train shown ghosted behind for comparison)

Together we thrive



For more information visit the website - [www.bridportcommunityrailway.com](http://www.bridportcommunityrailway.com)

**CENTRAL TO THE HOLLIS MEAD ETHOS IS HEALTH. HEALTHY MILK, FROM HEALTHY COWS FROM A HEALTHY FARM.**

HOLLIS MEAD only milk once a day, keeping their cows on a strict 100% farm-grown grass and wildflower diet. This ensures delicious non-homogenised milk that they sell entirely in glass bottles direct to the consumer.

Their cream, butter, yoghurt and kefir are also all bottled or rolled by hand with love on the farm 15 metres away from where the cows are milked.

Shunning the supermarket has meant HOLLIS MEAD have been able to focus on investing in nature, protecting skylarks, hares, dormice as well as planting over 12 miles of hedgerows and adopting over 50 hedgehogs. The result has been special recognition on a global scale by Compassion in World Farming as well as a finalist spot in the 2021 BBC Farming for the Future Awards.



See our locations in and around Bridport on pages 22 -23

Bailey & Sons, Broadwindeor Road Beaminster & R/O Lilliput Textiles, West Street, Bridport.

HOLLIS MEAD  
ORGANIC DAIRY

HOLLIS MEAD  
ORGANIC DAIRY

**MILK LIKE NO UDDER**  
FRESH AWARD WINNING  
ORGANIC MILK, BUTTER, CHEESE,  
YOGHURT, CREAM & KEFIR

Subscribe online or collect from a 24 hour vending machine near you

hollismeadorganicdairy.co.uk

@hollismeadorganicdairy



Are you considering having work done on your property ?  
Why not contact a member of our team for a  
FREE 'No Obligation Quotation'

**ADK**  
SCAFFOLDING LTD

facebook



Tel: 01308 459 242  
info@adkscaffolding.co.uk  
www.adkscaffolding.co.uk

**ATKINS**  
**AUCTIONS**

Old Style Values  
New Style Auctions

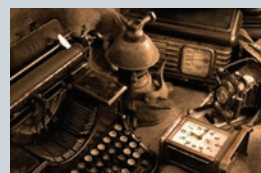
GAMBERLAKE  
AXMINSTER EX13 5JZ

OPEN 9 - 5 Monday - Friday

01297 631661

www.atkinsauctions.co.uk

MONTHLY AUCTIONS OF  
ANTIQUES • COLLECTABLES • JEWELLERY  
ART • RETRO • ANYTHING OLD & INTERESTING



FULL OR PART HOUSE CLEARANCES

15% COMMISSION Plus VAT

- NO MINIMUM CHARGE • NO LOTTING CHARGE
- NO ADMIN CHARGE • NO PAT TEST CHARGE
- NO INSURANCE CHARGE

**TRUST • TRANSPARENCY • TREASURES**



# MY EPILOG

BY GEOFF BAKER



## EVERY LIFE IS WORTH A STORY

During the near-decade when I worked for The Beatles I was astonished to learn that on average at least three books about the band are published by someone somewhere in the world every week - most of them written by people who never even met a Beatle, let alone interviewed one.

That's a lot of books; 150 a year, around 9,000 since the Fabs had their first hit in 1962 and the books, along with all of the newspaper articles, TV, radio shows and Get Back, the forthcoming documentary which is a makeover of the original and lugubrious Let It Be movie, should ensure that the band is remembered by everyone except the most exceptionally forgetful.

I always thought that was unfair, that, on top of all the riches and pleasures, fame grants the stars access to be remembered forever while the rest of us scuttle around continuing to be too unimportant to deserve leaving any sort of legacy because publishers aren't much interested in the story of a bite-sized life.

Although this imbalance bothered me I didn't think much about it until my father died, abruptly and without warning, and I realised that I knew so little about him and rued that I didn't know a lot more. I wished that I had chatted with him more and I that I had some record of those chats, so I could revisit them now and it would be like him being in the room again.

That gave me an idea for a new and unique service which I am shamelessly promoting here because I believe the point of it is important.

Every life has a story to it; no matter how lowly a lifetime, it has a tale. As the poem Desiderata puts it, "listen to others, even the dull and

ignorant, they too have their story".

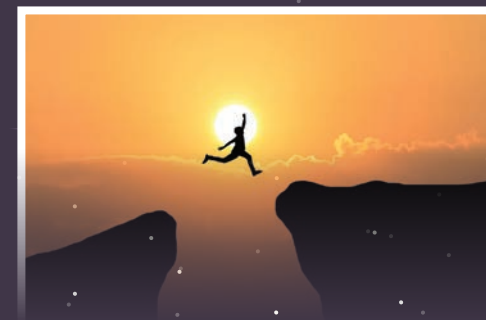
And while that story may not be fascinating to millions of pop fans, to your family, to your children and your children's children's children who may one day ask "I wonder what he was like?", that story is precious. It's all relative; one man's dull and ignorant is another man's Paul McCartney.

So I've come up with a way by which all of us, not just the famous, can be remembered for all time.

It's called My Epilog and basically it enables you to easily tell your story and create a permanent logbook of your life which will ensure that you will be remembered always - and remembered exactly as you'd like to be; it's your story, told your way, in your voice, saying 'remember me this way'.

It's not a book, it's a record that will last for all time. All you have to do is talk, I'll do the rest. If you want to know more - as limited space prevents me elaborating - email me at [geoffbaker12@btinternet.com](mailto:geoffbaker12@btinternet.com)

Every life is worth a story and as Desiderata (almost) also put it, "you are a child of the universe, no less than the trees and the stars; you have a right to be heard".

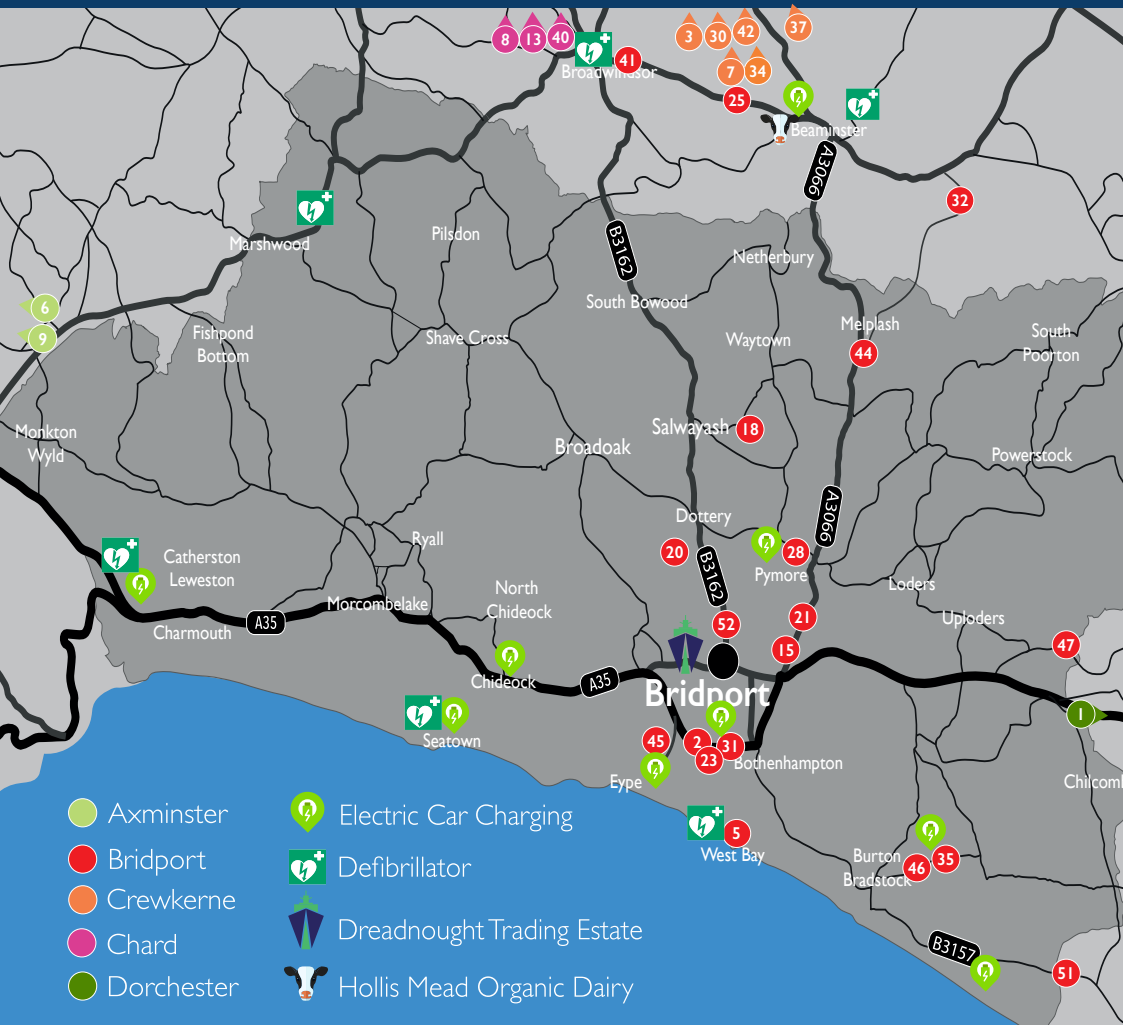


## WHAT'S YOUR STORY?



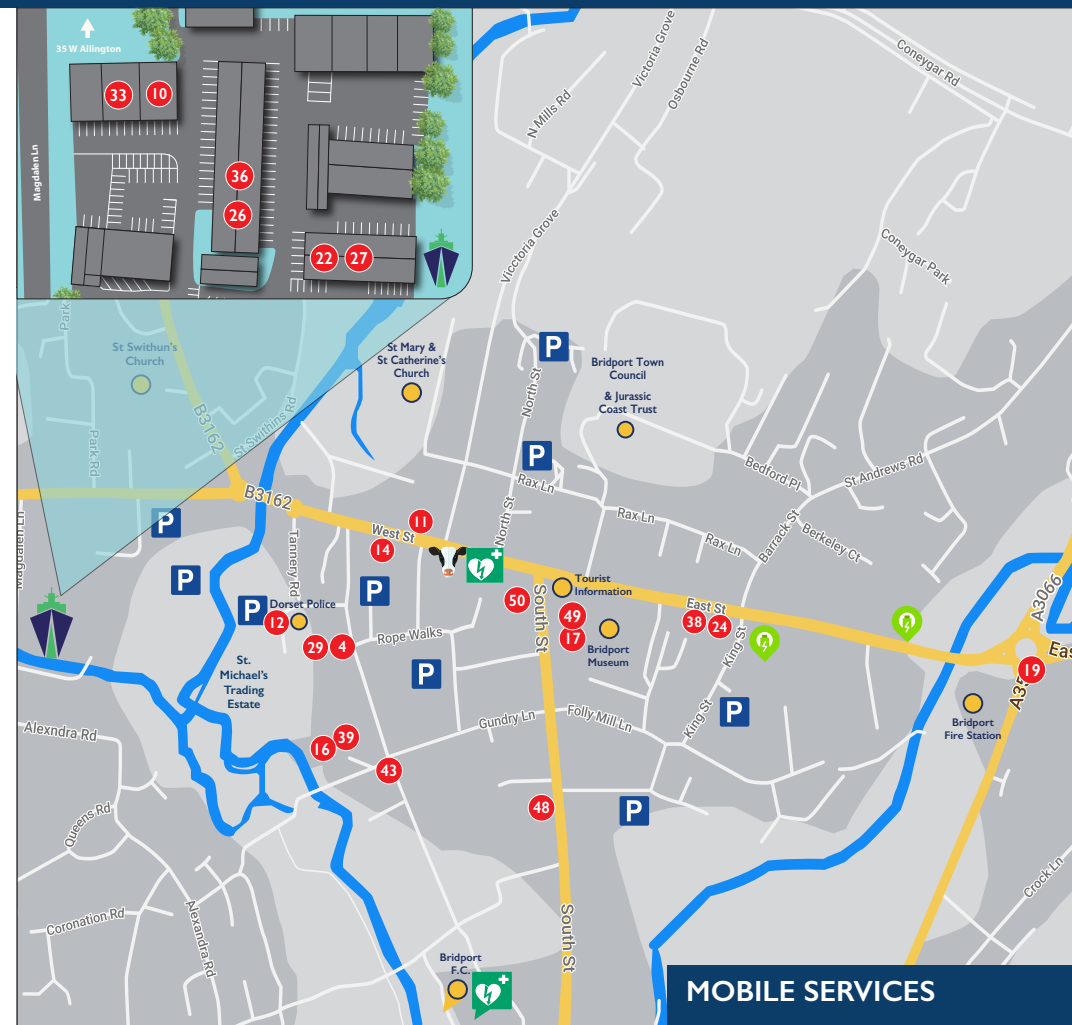


## DT6 AREA MAP



- |                               |                                    |                          |
|-------------------------------|------------------------------------|--------------------------|
| 1. Active Mobility            | 11. Bridport Antiques              | 21. Fast Tyre's          |
| 2. ADK Scaffolding Ltd        | 12. Bridport Auction House         | 22. Greig & Allen        |
| 3. Antiques Bazaar            | 13. Caravan & Motor home Solutions | 23. Grow Slow            |
| 4. ArtyFacts                  | 14. Carpet World                   | 24. Higos Insurance      |
| 5. A.R. Woolmington           | 15. Central Motors                 | 25. Humpits              |
| 6. Atkins Auctions            | 16. Clocktower Music               | 26. Hurt Locker          |
| 7. Auto Refurbs               | 17. DD Computers                   | 27. Hussey & Briggs      |
| 8. Auto Body Tec              | 18. Dorset Nectar Cider Farm       | 28. Howdens              |
| 9. Axminster Garden Machinery | 19. ETB Tyre's                     | 29. JCP Designs          |
| 10. Baby Gear                 | 20. Evans Plant Hire               | 30. JF Cars              |
|                               |                                    | 31. Jurassic Reclamation |

## BRIDPORT TOWN MAP



### MOBILE SERVICES

- |                                     |                                |
|-------------------------------------|--------------------------------|
| 32. Mapperton Gardens & Coach House | 42. Regency Care & Mobility    |
| 33. Mercato Italiano                | 43. Rockburn Ltd               |
| 34. Misterton Garage Ltd            | 44. The Corner Garage          |
| 35. Modbury Farm Shop               | 45. The New Inn Eype           |
| 36. Motorcare Bridport              | 46. The Parlour Cafe           |
| 37. MST Group                       | 47. The Spyway Inn             |
| 38. Nantes Solicitors               | 48. The Trading Post           |
| 39. Pebble Vintage                  | 49. Vaperstar                  |
| 40. PCS Furnishing Centre           | 50. Vicary & Co                |
| 41. Redlands Yard                   | 51. Vurlands Animal Farm       |
|                                     | 52. Winterborne Legal Services |
- Bespoke Landscapes
  - Classic Car Restoration
  - Cognitive Behavioral Hypnosis
  - Colourfence
  - Countryside Scaffolding
  - Craig's Taxis
  - Desk Top Publishing
  - Gavin Dixon Financial Solutions
  - G.P. Butler & Son
  - MH Electrical
  - Tricky Dicky Groundworks



**A.G.M.**  
Axminster Garden Machinery

SALES • SERVICE • SPARES  
Independent Specialists

FACTORY APPOINTED AUTHORISED DEALERS  
OF ALL POWER EQUIPMENT WE SELL  
**Quality, Value and Service**  
....Small enough to care, ....Big enough to cope

**MAIN AGENTS AND DEALERS FOR**

**AS MOTOR** **DR** **BRIGGS & STRATTON** **ECHO** **BEAR** **CAT** **SNAPPER**  
**Simplicity** **Masport** **ECHO** **Cub Cadet** **WALKER**  
**WOLF** **Garden** **ELITE** **WILKINSON** **DANARM** **LAWNELITE** **Apache**

Proper Horticultural Engineering since 1979

 **Always Great Deals Available**

Unit 1A Weycroft Avenue, Millway Rise, Axminster, EX13 5HU  
Tel: 01297 631186  
[www.axminstergardenmachinery.co.uk](http://www.axminstergardenmachinery.co.uk)

**VINYL RECORDS  
BOUGHT, SOLD, TRADED**

**01308 458077**  
[thecrew@clocktowermusic.co.uk](mailto:thecrew@clocktowermusic.co.uk)

OPEN 10TILL 5  
WEDNESDAY TO SATURDAY

ST MICHAELS ESTATE, BRIDPORT, DT6 3RR  
[clocktowermusic.co.uk](http://clocktowermusic.co.uk)



**GP BUTLER AND SON  
CAR RECYCLERS**

Environment Agency Authorised  
Treatment Facility

**Top Prices Paid for End  
of Life Vehicles**

**CALL 01308 867123**



  
**MHELECTRICAL**

**AERIAL, SATELLITE AND WIFI**  
[Enquiriesmhelectrical@hotmail.com](mailto:Enquiriesmhelectrical@hotmail.com)  
Phone: 07447302905  
[MHELECTRICAL.BIZ](http://MHELECTRICAL.BIZ)



**Checkatrade.com**  
Where reputation matters 

**Misterton Garage LTD**

**MOTS & SERVICING • COMPETITIVE PRICES  
BATTERIES, TYRES • EXHAUSTS & BRAKES  
FREE COURTESY CAR  
QUALTY USED CARS  
PETROL STATION  
ALL MAKES & MODELS SERVICES**

**FORD SERVICE  
CENTRE** 

**[www.mistertongarage.co.uk](http://www.mistertongarage.co.uk)**  
**Tel: 01460 72997 Fax: 01460 73661**  
**Misterton, Nr Crewkerne TA18 8LY**

  
**GDFS**

Gavin Dixon Finance Solutions Ltd - Your Local Business Finance Specialist

If your business is looking to increase productivity but worried that it may have an effect on your cash-flow...  
... then may be finance is the way forward.

At GDFS we offer a range of products that suit your business requirements such as:

- **HIRE PURCHASE • FINANCE LEASE**
- **CONTRACT HIRE • OPERATING LEASE**

We will find you the right solution to meet your individual requirements.

If your business needs a new or used asset, GDFS will make sure that your business aspirations are met.

If you need to raise some cash using unencumbered assets as security, we offer **REFINANCE** too.

Gavin Dixon Finance Solutions Limited is an Appointed Representative of Rural Finance Limited.  
Rural Finance Limited is authorised and regulated by the Financial Conduct Authority



  
**GDFS**  
**01308 480248**  
[www.gdfinancesolutions.co.uk](http://www.gdfinancesolutions.co.uk)  
[enquiries@gdfinancesolutions.co.uk](mailto:enquiries@gdfinancesolutions.co.uk)

  
**Tom Elliott**  
**07467 818363**  
[tom@gdfinancesolutions.co.uk](mailto:tom@gdfinancesolutions.co.uk)



# BRIDPORT ANTIQUES

Antique, Vintage, Collectables, Artists, Craftsmen & Artisans



THE OLD COURT, 41 WEST STREET,  
BRIDPORT, DORSET DT6 3QU



ONLINE SALES WITH COLLECTION AVAILABLE

[info@bridportantiques.co.uk](mailto:info@bridportantiques.co.uk)

01308 455646 | [www.bridportantiques.co.uk](http://www.bridportantiques.co.uk)

## Auto Refurbs Ltd

From minor bump to major thump

01460 78000

[workshop@autorefurb.com](mailto:workshop@autorefurb.com)

[f@AutoRefurbsLtd](https://www.facebook.com/AutoRefurbsLtd)



- Low Bake Oven • Fully Equipped Body Shop • Alloy Refurbishment
- Air Conditioning • Light Commercials • Caravans & Campers • Insurance Approved
- Motorbike Body Repair • Collection & Delivery • Free Courtesy Cars

[www.autorefurb.com](http://www.autorefurb.com)

UNIT 2E | CROPMEAD TRADING ESTATE | CREWKERNE | SOMERSET | TA18 7HE

## ★ VAPER STAR ★

PREMIUM E-LIQUIDS

Vaperstar have been in Bridport for 8 years, supplying E-Liquids in a wide variety of brands and flavours. Find our shop on Bucky Doo Square, South Street, Bridport.

Our knowledgeable staff will always put you at ease & on the right path. Whether you are an old hand or new to vaping we are the people to trust. We have our own unique range of bespoke E-liquids created for the discerning user. 22 unique recipes in shortfill size, plus 20 more in 10ml size.

We have a huge range of imported, professional CBD products from Switzerland, U.S.A & Turkey. Our CBD herb comes in 10 strains, CBD pre rolls in 7 strains, CBD vape liquids, Oral CBD liquids plus CBD Edibles.

We run an instore loyalty reward scheme which gives you discounts, plus a special 10% discounts for all the NHS, Police, Ambulance & Fire Brigade Crews & the Army.

Not able to go out at the moment? Buy all our products online at [www.vaperstar.co.uk](http://www.vaperstar.co.uk) with same day postage if received by 1pm & free postage on orders over £25.



## ★ VAPER STAR ★

PREMIUM E-LIQUIDS

Stockists of the biggest names in Vaping AT GREAT PRICES!



INNOKIN

VOOPOO



VAPORESSO®

SMOK®

aspire  
LIFE CHANGING



Free UK Standard  
Delivery



Same day dispatch if  
ordered by 1pm



UK Based & Certified by  
UK regulators

Tel: 01308 425511 [info@vaperstar.co.uk](mailto:info@vaperstar.co.uk) [www.vaperstar.co.uk](http://www.vaperstar.co.uk)



5B South Street, Bridport Dorset DT6 3NR

Locations in Bridport, Dorchester & Pool





# EYPE DOWN, SEATOWN, CHIDEOCK, HELL LANE & QUARRY HILL.

**We chose a glorious August afternoon for our 6 mile hike around these quiet parts of West Dorset.**

Starting from the A35 at **Eype Down** (Jurassic Coast buses stop at The Old London Inn), we climbed up to Eype Down via the lane at the brow of the A35, where **Quarr Lane** crosses to Eype Down. **CAUTION.** This is a very busy section of the A35 with no pavements.

We took the track straight ahead, with evidence of vehicular use. We soon rose above the traffic noise, and the pathways split into 3. Take the centre path, which soon joins a boundary fence on the right, then climbs steadily to a plateau, with far-reaching views to **Seatown** and **Chideock**. Waymarkers here confirm your route – straight on again, soon regaining a boundary fence on the right. Then a climb into the trees. Soon a steep path appears on the left. Worth climbing up here, and through the undergrowth to get a great view of

the south side of the nearby iconic **Colmers Hill**.

Retrace your steps, re joining the original path, and soon a gate appears leading onto open farmland. From here, ahead the beacon at **Thorncombe Beacon** is visible. This is our next target. Crossing a couple of enclosures, the pathway climbs to this major high point on The Jurassic Coast.

On the day of our visit at least 6 hang-gliders were swooping and swaying above us. Combined with the coastal views East and West, this was worth the climb, and justified 15 minutes of reflection.

From here it is downhill to **Seatown** - well almost! The undulations of the cliffs create some steep falls followed by reverse climbs, but the overall effect is a fall of 515 feet (157m) to the beach at **Seatown**. Even in season, **Seatown** is probably the only opportunity for a refreshment break on this walk.

Turn away from the beach and at **The Golden Cap Store**, fork right onto the concrete road. This leads through caravan and campsites to **Chideock**.

*(Historical Note. This concrete road was constructed in the early years of World War 2. For centuries pebbles had been "picked" from the beach by local people, creating an industry which supplied national milling operations. At the outbreak of war in 1939, the authorities grasped the opportunity to use pebbles to construct airfield runways. Seatown became a major local source of material, and so this concrete road was built – of local pebbles. The "new" road enabled convoys of lorries to adopt a "one way system" to and from Seatown beach, taking pebbles to The Blackdown Hills for the construction of military runways at Duneswell, Smeatharpe and Trickey Warren airfields.)*

At the A35 in **Chideock**, carefully cross the main road at the **Church of St Giles**, and head for **North Chideock**. Soon you will encounter a strange arch over a small gate into woodland. This arch is a whale's jaw-bone, brought home by a venturing ancestor of the Weld Family, former owners of **Chideock Manor**. A few hundred yards further is the charming **Roman Catholic Church**, down a slight incline on the right. Open to the public every day.

Continue to the next junction, and a worthwhile diversion, 100 yards to the left, is a

traditional local stone threshing barn. Return to the main route, and continue to the T junction. Turn right, then fork right into **Hell Lane**. Past the holiday lets, look for a watery lane to the left of a farmyard. This lane takes you to the top of "**Quarr Hill**". Wet, muddy and steep in places, this is one of West Dorset's "sunken lanes" made famous in a novel by Geoffrey Household – "**Rogue Male**". Was this his hiding place? Overhung by branches, with few glimpses of the sun, this part of the walk is very atmospheric. Near the top, rock faces appear left and right with exposed tree roots and numerous initials inscribed over the years, then a rather more sinister face appears on the right in the green gloom.....

And then you are in the sunshine again!

Turn right, then taking the middle path, and behold! Another gorgeous view of **Colmers Hill**, this time from the west. Follow this path through a further sunken lane, which soon emerges below **Quarr Hill**, with a marvelous vista across the valley to **Bridport**. Within half a mile regain the A35 at your starting point.

**DISTANCE?** Circa 6 miles.

**DURATION?** 3.5 – 4 hours.

**OS Map?** Landranger 193 – Taunton and Lyme Regis – very handy.

**DIFFICULTY?** Arduous. Walk it this way round. The reverse route is much harder!

**DOGS?** Always onleads.



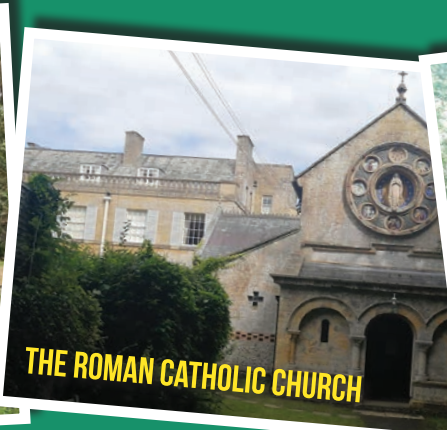
HANGLIDER AT THORNCOMBE BEACON



SEATOWN AND GOLDEN CAP



WHALE'S JAWBONE



THE ROMAN CATHOLIC CHURCH



SUNKEN LANE



## JCP Design

www.jcp-design.co.uk

Hand crafted,  
quality  
Hi-Fi



solid walnut  
compact  
bookshelf  
speakers.

Unit 100,  
St. Michael's  
Trading estate  
Bridport  
DT6 3RR

Visit the shop  
or email for more  
information.

contact@jcp-design.co.uk

## CRAIG'S TAXIS

Established in 2002



- 7 DAYS A WEEK
- 4, 6 & 8 SEATERS AVAILABLE
- AIRPORTS
- CONTRACTS
- DOCKS
- PORTS
- STATIONS
- WEDDINGS

OPERATING  
7 DAYS A WEEK

www.craigstaxis.co.uk

01308 86 1000



# Humpits

"WE HUMP ANYTHING"

Removals • House Clearances • Garden Clearance  
Delivery Service • Auction Runs

Telephone 01308 863194 Mobile 07714 919290

Email [simon@humpits.co.uk](mailto:simon@humpits.co.uk) Visit us at [www.humpits.co.uk](http://www.humpits.co.uk)

VISIT OUR  
**Preloved Emporium**

Open every Saturday 9am - 12pm  
Whitehart Yard, Hogshill Street,  
Beaminster DT8 3AE

With over 25 years experience supplying to the trade, Howdens is here for you.

At Howdens Bridport we are here for all your kitchen, appliance, flooring & joinery needs. With our extensive local and product knowledge, vast product range and local stock availability we just cannot be beat.

We believe in good craftsmanship above all things, this is why we sell directly to the Trade, as they have the know how to install our products to the highest standards.

Our Autumn Madness starts on the 6<sup>th</sup> September and runs until the 30<sup>th</sup> October 2021, so don't miss out on your chance to get the best prices around!



TRADE ONLY

FROM STOCK

Great News!!

# IT'S THE BIG DEAL AT HOWDENS BRIDPORT!

WE'VE GONE MAD! WE'VE EXTENDED OCTOBER MADNESS!

INSANE OFFERS ON ALL OF OUR KITCHEN RANGES!

FROM 6<sup>TH</sup> SEPTEMBER - 31<sup>ST</sup> OCTOBER 2021

LOOK OUT FOR AMAZING HARDWARE &  
JOINERY OFFERS AND FREE FOOD DAYS!



CALL NOW ON  
01308 428350

UNIT 4B, GORE CROSS BUSINESS PARK,  
CORBIN WAY, BRIDPORT, DT6 3UX

[bridport@howdens.com](mailto:bridport@howdens.com)

[www.howdens.com](http://www.howdens.com)



## QUALITY USED CAR SPECIALIST IN CREWKERNE SOMERSET WITH FULL DEALER FACILITIES



- PART EXCHANGE TAKEN
- FINANCE AVAILABLE
- CREDIT & DEBIT CARDS
- QUALITY CARS PURCHASED

Tel. **01460 72517**  
Mob. **07904 034527**  
jandfcars2010@yahoo.co.uk

**AA**

You're in safe hands  
This dealer has signed our Dealer Promise

JF CARS, SOUTH STREET, CREWKERNE, SOMERSET, TA18 8AE

**WWW.JFCARS.NET**



## COLOURFENCE FENCING IS A UNIQUE PRODUCT, THERE'S NOTHING ELSE LIKE IT IN THE UK.

ColourFence is becoming increasingly popular across the UK with homeowners fed up of losing fences to winter storms and the hassle of replacing them. Equally, timber fences decay rapidly and require regular treatment with paint and chemical cleaners. Unlike standard timber fences, ColourFence is designed to resist harsh weather conditions and will withstand wind gusts of up to 130mph!

The weatherproof and durable ColourFence range has a number of core benefits that appeal to homeowners, it's guaranteed not to warp, crack, rot, peel or colour fade for the next 25 years.

When fencing maintenance costs are high, you want an option that is easy, low maintenance and cost-effective; and ColourFence is all those things and more, not least the 25-year guarantee. No painting,

preserving, repairs or harsh cleaning chemicals, just an occasional hose down to keep it looking as good as new.

There's a choice of colours available, green, brown, cream and blue – to harmonise and enhance your garden's design. Choose a trellis in the same shade or contrasting colour. Both sides of the panels are the same colour meaning both you and your neighbour have a stunning fence to look at year after year, helping you build good neighbourly relations.

The panels are 2.35 metres wide compared to 1.5 metres wide for standard timber panels (so you need fewer panels like for like) and can be cut on-site to custom fit your garden, whatever the size and the natural contours of your land.

For further information and to arrange a free no obligation survey call **01305 881022** or visit **colourfencedorset.co.uk**

Safe, Secure & very, very strong....

## The **ULTIMATE** garden fence



Colourfence are transforming gardens across Dorset & South Somerset.

A garden fence built to last, with colourfence once it's up it stays' up, resisting wind gusts of up to 130mph!

Colourfence panels are made from innovative Colorbond Steel and are guaranteed to last at least 25 years, an occasional wash down with water will leave your fence looking beautiful year after year.

Available in a variety of heights and colours, with or without trellis.

A fence that requires no painting or treatment!

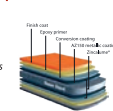


The only fence that won't  
warp crack shrink rot peel break blow over  
...well for 25 years, at least!



**The Fence that repairs itself.**

If you scratch or cut Colourfence, the ingenious zinc element in the Zincolume steel reacts with moisture to form a protective barrier to prevent any corrosion with no action needed from you.



**STRONG, SECURE & BUILT TO LAST!**

For a free no-obligation site visit, please call **Andy & Shelley**.  
tel: **01305 881022** | **colourfencedorset.co.uk**







## MARINE AND MARITIME MATCHMAKING AT OCEAN BUSINESS 21

**Ocean Business b2match** is a networking event which will give businesses a chance to meet potential business partners and create real business and tech development opportunities in the maritime sector. The event will take place on **13 October 2021**. Businesses can register now to attend and will be able to add their business profile and view profiles of other attendees ahead of the event.

### FOR WHOM?

- Marine engineering
- Maritime defence
- Environmental monitoring and pollution control
- Ports and harbours
- Marine Autonomous Systems

### WHY PARTICIPATE?

- Establishing technology and commercial partnerships
- Expanding your business abroad
- Learning about new technologies and solutions
- Showcase your most favourable projects, products or know-how
- Present, discuss and develop new projects

### LOCATION

European Way, Southampton, SO14 3ZH United Kingdom



**Innovate  
UK**



**National  
Oceanography Centre**  
NATURAL ENVIRONMENT RESEARCH COUNCIL

**A CHANCE TO MEET  
POTENTIAL BUSINESS  
AND TECHNOLOGY  
PARTNERS  
IN ONE DAY!**





**DRESS FOR ADVENTURE**

**Call us:**  
01308 425271

**Visit us:**  
74 South St, Bridport,  
Dorset, DT6 3NN

**Affordable  
Outdoor  
Clothing,  
Workwear  
and  
Footwear.**

**Email us:** thetradingpost74@outlook.com  
**Shop online:** trading-post-Bridport.myshopify.com

**Follow us on Facebook, Instagram & Shopify**

*We stock outdoor clothing and workwear  
by all these manufacturers*



## Carpet World

www.carpetworld-bridport.co.uk

QUALITY CARPETS ~ VINYLs ~ WOOD  
~ LAMINATE ~ TILES ~ RUGS



**Free Measuring and Planning Service**

**Expert Fitting of Floor Coverings  
by our own employed fitters**

**Visit Our Showroom**

52a West Street, Bridport, DT6 3QP  
(next to waitrose)



**01308 427081**



## WINTERBORNE LEGAL SERVICES

*Lasting Powers of Attorney • Wills  
Probate • Estate Administration*

### Have you got someone to rely on?

If you became ill and unable to cope with paying your bills and maintaining your home, make sure a family member would be able to step in and deal with your finances by making a **Lasting Power of Attorney**.


If you are caring for an elderly relative, a Lasting Power of Attorney will mean that you can provide the support your relative needs.

Our solicitors help people get important documents in place to prepare for the unexpected: please get in touch to see how we can help you.




**T: 01308 424808**

**E: christine@winterbornelegal.co.uk**  
www.winterbornelegal.com



**The Spyway Inn**  
Askerswell, Nr Bridport  
**Tel: 01308 485250**



**Free House**  
Showcasing local and smaller breweries

**Beer Garden**  
with fabulous views

**B&B**  
Home Cooked Food  
Dog Friendly

Check our website for our latest opening hours & menu  
Bookings only for the **SPYPODs** due to availability  
**www.thespywayinn.com**

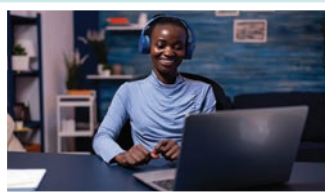




## SUPPORT TO GET YOUR BUSINESS ONLINE

Dorset Local Enterprise Partnership (LEP) are offering eligible local businesses free access to the popular ecommerce platform, ShopAppy.com. The scheme will be funded until 31 December 2021 and is available to businesses trading in the following areas :

- Bridport
- Bournemouth
- Gillingham
- Sherborne
- Wimborne



Shops and businesses based in these towns are urged to come forward immediately to take advantage of the free opportunity to secure more local trade - businesses don't need to be members of these business communities, you just need to be trading in these areas.

- Bridport (DT6)
- Bournemouth (BH1, BH2, BH4, BH5, BH6, BH7, BH8, BH9, BH10 & BH11)
- Gillingham (SP8)
- Sherborne (DT9, BA21, BA22)
- Wimborne (BH21)

We're funding the scheme free of charge until 31 December 2021. Register a new account at [www.shopappy.com/vendor](http://www.shopappy.com/vendor) selecting the membership option 'Covid19 Free' when you complete your details.

Or contact

**DORSET  
GATEWAY**

[www.dorsetgateway.co.uk](http://www.dorsetgateway.co.uk)

[gateway@dccci.co.uk](mailto:gateway@dccci.co.uk)

01202 714800



Automotive Repairs



**FASTyres Ltd are delighted to soon be celebrating their 5<sup>th</sup> anniversary in Bridport.**

With over 25 years experience within the local motor trade, their fully equipped workshop offers an extensive range of vehicle services including tyres, servicing, MOTs, repairs, diagnostics, wheel alignment and more.

**Mobile Tyre Repair and Fitting service** also available - either at your home, workplace or the roadside and for all types of vehicles - including trucks, tractors and caravans. (24 hr emergency service also available).

For more information or to book in, call **01308 480720** or visit **[www.fastyres.co.uk](http://www.fastyres.co.uk)**



Automotive Repairs



• Tyres • Brakes • Servicing • MOTs • Wheel Alignment • Repairs

Contact us today for all your vehicle requirements



01308 480720



[workshop@fastyres.co.uk](mailto:workshop@fastyres.co.uk)



@FASTyresLTD

### OPENING HOURS

Mon - Fri, 8.15am - 5.30pm  
(24 hr Emergency Mobile Tyre & Repair service also available)

### FIND US AT

Unit 8C, St Andrews Trading Estate, Bridport DT6 3EX  
(Located behind Hampton Automotive)

• Over 200 tyres in stock • Authorised distributors of:

**MAXXIS** **NANKANG** **PIRELLI** **MICHELIN** **DUNLOP** **GOODYEAR**

**MOBILE TYRES - AT HOME, WORK OR THE ROADSIDE**





# Antiques Bazaar

A Great Centre for Antiques and Collectables

OVER 75 TRADERS AT ONE LARGE VENUE - TRADING 7 DAYS A WEEK - FREE PARKING



The Old Textile Mill, South Street, Crewkerne. TA18 8AG

Tel: 01460 77121



@AntiquesBazaars

www.antiquesbazaar.co.uk



**NANTES**  
Solicitors & Notaries

**DORSET'S LEADING LAW FIRM**

Nantes offer a free, no obligation, appointment.

- Wills
- Lasting Powers of Attorney
- Probate
- Conveyancing
- Dispute Resolution
- Family Law

nantes.co.uk info@nantes.co.uk  
Bridport Dorchester Portland Weymouth

**A. R. WOOLMINGTON**  
Established 1983

Domestic Appliances  
Sales and Service

Open 2 - 4 Monday - Saturday Closed Thursdays

UNIT 3, THE OLD TIMBER YARD, WEST BAY ROAD,  
WEST BAY, BRIDPORT, DORSET DT6 4EL

Telephone/Fax: Bridport (01308) 425268  
E-mail: westbaydomestics@hotmail.co.uk



**COUNTRYSIDE**  
Scaffolding Ltd

Scaffolding Erection  
& Labour Supply

Free Estimates • Fully Insured

s.g.ward@hotmail.co.uk

Call Simon Ward on: 07969 744343



**MAPPERTON**

Mapperton Gardens are open for visitors  
11am-5pm, Sunday to Thursday

The Coach House café  
11am - 5pm, Sunday to Thursday  
Delicious light dishes, sandwiches and cakes with a selection of hot and cold drinks. Licensed.

Mapperton House is open for prebooked tours until the end of September, and for prebooked group tours in October.

Garden ticket: £11, under 16s £3,  
under 5s free entry - November & December £5  
Garden Season Pass available from £20  
Free entry for HH and RHS members

House & Garden Ticket: £14, under 16s £5,  
under 5s free entry

Please check mapperton.com for updates & events before you visit.

01308 862645 mapperton.com DT8 3NR



**GROW SLOW**  
FARM SHOP • NURSERY • CAFE

BEAUTIFUL PLANTS  
THE PACK HORSE CAFE  
HOME GROWN MICRO-GREENS  
LOCALLY MADE ARTS & CRAFTS  
VINTAGE HOME & GARDEN-WARE

WORKSHOPS & EVENTS

THE  
PACK  
HORSE **Cafe**

www.growslow.co.uk  
Find us near Bridport Recycling Center  
Broomhill Farm, Westbay Fields, Dorset, DT6 5LB  
Tel: 07766930464 / 07789676967

**CENTRAL MOTORS**  
PREMIER VEHICLE SERVICING AND REPAIRS

**COUNT ON OUR VEHICLE SERVICING AND REPAIRS**  
in Bridport, Dorset, and the Surrounding Areas

Repair Specialists  
High-Quality Components  
Batteries & Breakdowns  
Expert Diagnostics

01308 423 994  
info@centralmotorsbridport.co.uk  
118b St. Andrews Road,  
Bridport, Dorset, DT6 3BL

Professional Associations

- ✓ AA Approved
- ✓ Trading Standards Approved
- ✓ Trust My Garage
- ✓ IMI Qualified Technicians

www.centralmotorsbridport.co.uk

## SUDOKU 1

8	3	5						
4				8				7
	2				1			9
	7	3	8				1	
6		1				9		5
	5				7	8	2	
3			1				4	
5				7				1
						7	5	6

copyright © 2021 by WWW.SUDOKU129.COM

Level: Easy

Date: \_\_\_\_\_

Start time: \_\_\_\_\_

Time to solve: \_\_\_\_\_

## SUDOKU 2

					3		5	
		4	5		6	1		
3				7				8
	4	1					7	9
8	2					5	3	
9				6				4
		6	8		4	2		
	5		3					

copyright © 2021 by WWW.SUDOKU129.COM

Level: Medium

Date: \_\_\_\_\_

Start time: \_\_\_\_\_

Time to solve: \_\_\_\_\_

## THE BRIDPORT FLYER WINTER 2021

Do you like what you see here in **The Bridport Flyer**? Would you like to feature your business in our next edition - Winter 2021? We publish 4 times a year; Autumn, Winter, Spring and Summer. We cover the whole of the DT6 postcode, and distribute via Royal Mail, delivering to every home and business. That is 12,200 addresses. Extra copies are available from advertisers, and focal points such as supermarkets, hotels, filling stations etc.

We have our own in-house graphics designer who will create your advert for you completely free of charge.

### BOOKING DEADLINE

**22<sup>nd</sup> October 2021.**

**DISTRIBUTION. Week commencing Monday 22<sup>nd</sup> November 2021**

Please contact Andy Munckton on 07823 346666 or email [theflyerpublications@gmail.com](mailto:theflyerpublications@gmail.com).



### SUDOKU ANSWERS:

7	6	9	2	1	8	3	5	4
5	1	2	4	6	8	9	3	7
4	8	3	5	7	2	1	6	9
1	9	6	4	7	9	7	2	8
2	4	8	7	5	1	3	6	9
7	9	8	3	2	1	4	5	6
8	2	2	4	1	7	6	5	9
3	6	1	4	5	8	7	2	9
9	5	3	8	2	7	4	6	1

SUDOKU 2

SUDOKU 1

- Family run friendly pub
- Traditional good pub food
- Local to the beach
- Amazing sunset views on our undercover terrace
- Great cask ales, lagers, local ciders and wines
- Children's playhouse

**TEL: 01308 423254**  
[www.newinneype.com](http://www.newinneype.com)  
[valerieherring85@outlook.com](mailto:valerieherring85@outlook.com)  
 The New Inn, Mount Lane, Eype, Bridport DT6 6AP

## Tricky Dicky GROUNDWORKS



Resin Driveways  
 Brick Paver Driveways  
 Patio's and Paths

**07968 648 903**  
**07522 605 455**



## BRIDPORT AUCTION HOUSE

"Psst! Have you heard about the Bridport Auction ?  
 It's where Antiques Roadshow, Bargain Hunt, Flog It and Salvage Hunters are all rolled into one !"

Monthly sales of Collectables and Antiques since 1998 and still going strong with live online sales reaching a world-wide audience.



**Telephone: 01308 459400** for entries in forthcoming auctions.  
[www.bridportauctionhouse.com](http://www.bridportauctionhouse.com) Email: [info@bridportauctionhouse.com](mailto:info@bridportauctionhouse.com)



# MOTORCARE

## Car Repairs & Servicing

Fully Qualified Technicians / Over 35 Years Experience

**We will beat any price!**  
(on production of a genuine quote)

**01308  
427381**

**NEVER PAY  
FULL PRICE  
AGAIN!**



**with  
MOTORCARE  
Loyalty Card**

**10% Off each bill  
with every loyalty  
card stamped**

**Collect 10 stamps  
to receive 25% Off!**

**Mot Testing Station**  
**MOT just £40 - cheapest in town!**

**Air Con (r134a) £49.99**

**Latest Diagnostic Equipment**

**Exhausts, Tyres & Batteries**

**Welding & Minor Bodywork Repairs**

**Air Conditioning Servicing**

**Mechanical Rebuilds**

**Competitive Rates**

**Free Estimates**

**f We run regular competitions on Facebook  
to win free stuff! Just 'like and share' to enter**

**MOTORCARE (BRIDPORT) LTD / 01308 427381 / [www.motorcarebridportltd.co.uk](http://www.motorcarebridportltd.co.uk)**  
Unit 25 Dreadnought Trading Estate, Bridport, Dorset DT6 5BU  
[motorcarebridport@btconnect.com](mailto:motorcarebridport@btconnect.com)



# MOTORCARE

Here at Motorcare, we are a family run business, established in 1980. Over the years we have built up an enviable reputation for friendly, knowledgeable service, in a relaxed atmosphere.

*We are here to help you get your vehicle back on the road as soon as possible.* We have embraced the latest technology, including diesel particulate filters, whilst retaining our knowledge of the workings of older classic cars.

Whether your vehicle is old or new, Motorcare have the best mechanics on hand to fix any vehicle problem you may have.

*We understand how important your car is to you.* We've built an unparalleled foundation of knowledge through rigorous training. It is our standard practice for each new technician to shadow more experienced team members and learn the tricks of the trade only the most seasoned mechanics know.

*Our craft is our pride.* Leave your car with Motorcare the professionals who really care!

**CALL US NOW ON 01308 427381**  
**NEVER PAY FULL PRICE FOR CAR REPAIRS AGAIN!**



# BRIDPORT'S ORGANIC CIDER FARM



## Award winning Artisan ciders

Producing award-winning artisan ciders, apple juices and vinegars using the finest Dorset grown produce

## Farm Shop & Tasting Room

Visit the Tasting Room shop to sample one of the delicious whole juice ciders or relax in the Cider Garden to enjoy a glass of our finest.

**Farmshop & Tasting Room Open Mon-Sat 9-7pm all year round!**



## Cider Farm Tour & Tasting

Explore our Journey through the cider making year. Discover Dorset Cider over the centuries. Tours of the Cider Orchard 11.00am Thursday, Fridays and Saturdays. - Booking required.

Follow us online



Use Discount code  
**SummerCider10%**  
when ordering  
from our online  
shop for 10% Off  
your order!!



t: 01308 488 382 m: 07515 806 546 [www.dorsetnectar.co.uk](http://www.dorsetnectar.co.uk)

Pineapple lane, Waytown, Bridport, Dorset, DT6 5HZ